

NUTPLATE MEETS THE STRENGTH AND REUSABILITY REQUIREMENTS OF NASM25027.

THREAD AND DIMENSION DATA (ALL DIMENSIONS BEFORE PAINT)

PART NUMBER	THREAD SIZE	A MAX	B MAX	C MAX	D MIN	E MAX	F MAX	H MAX	R MIN	M MIN	COLOR CODE
CB6008 () 08-2	.1640-32 UNJC-3B	.813	.580	.687	.204	.312	.800	.325	.125	.168	NONE
CB6008 () 3-2	.1900-32 UNJF-3B	.813	.580	.687	.230	.312	.800	.320	.125	.194	NONE
CB6008 () 3-3								.383	.187		RED
CB6008 () 3-4								.445	.250		GREEN
CB6008 () 3-5								.508	.312		BLACK
CB6008 () 3-6	.2500-28 UNJF-3B	.925	.725	.937	.290	.375	.950	.570	.375	.254	BLUE
CB6008 () 3-7								.633	.437		ORANGE
CB6008 () 3-8								.695	.500		PURPLE
CB6008 () 4-2								.765	1.025		.290
CB6008 () 4-3	.428	.187	RED								
CB6008 () 4-4	.490	.250	GREEN								
CB6008 () 4-5	.553	.312	BLACK								
CB6008 () 4-6	.3125-24 UNJF-3B	1.037	.807	1.025	.353	.438	1.050	.615	.375	.317	BLUE
CB6008 () 4-7								.678	.437		ORANGE
CB6008 () 4-8								.740	.500		PURPLE
CB6008 () 5-2								.825	1.075		.353
CB6008 () 5-3	.462	.187	RED								
CB6008 () 5-4	.524	.250	GREEN								
CB6008 () 5-5	.586	.312	BLACK								
CB6008 () 5-6	.3750-24 UNJF-3B	1.21	.99	.95	.415	.485	1.24	.649	.375	.379	BLUE
CB6008 () 5-7								.711	.437		ORANGE
CB6008 () 5-8								.774	.500		PURPLE
CB6008 () 6-2								.825	1.41		1.11
CB6008 () 7-2	.560	.125	NONE								
CB6008 () 8-2	.640	.125	NONE								
CB6008 () 8-2	.5000-20 UNJF-3B	1.66	1.24	1.15	.540	.685	1.70	.640		.125	

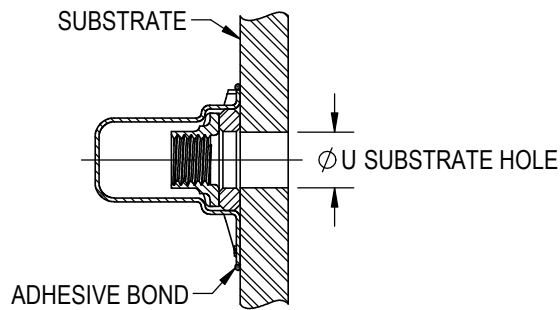
UNLESS OTHERWISE SPECIFIED, ALL DIMENSIONS ARE IN INCHES AND TOLERANCES ARE AS SHOWN BELOW. DIMENSIONAL TOLERANCES AND SYMBOLS PER ANSI Y14.5M-1982.

THE PARTS SHOWN IN THIS DRAWING ARE PROPRIETARY AND MAY BE THE SUBJECT OF ISSUED UNITED STATES AND FOREIGN PATENTS AND PATENTS PENDING. UNAUTHORIZED REPRODUCTION AND/OR DISTRIBUTION OF THIS DRAWING IS SPECIFICALLY PROHIBITED.



2151 LOCKHEED WAY
CARSON CITY, NEVADA 89706

APPROVALS		DATE		TITLE			
ANGLES	±1°	DRAWN	GTP	NUTPLATE, FLOATING, SEALED, ONE LUG			
.XX	±.03	CHECKED	<i>JD Carter</i>	SIZE	CAGE CODE	DWG. NO.	REV.
.XXX	±.010	RELEASED	JLH	A	66530	CB6008	9
.XXXX	±.001	REVISED	GTP	SCALE: 1:1		1MAY20	SHEET 1 OF 4



NUT MATERIAL AND FINISH DATA

CODE	MATERIAL	SPEC.	FINISH	SPEC.	DRI-FILM LUBE
-	A-286 CRES	AMS 5525, 5726, 5731, 5732, 5737	PASSIVATE	AMS 2700 METHOD 1, TYPE 8	AS5272 TYPE I OR II
CRC			CAD PLATE	AMS-QQ-P-416 TY II, CL 2	

DOME MATERIAL AND FINISH DATA

CODE	MATERIAL	SPEC.	PASSIVATE
CR	A-286 CRES	AMS 5525, 5726, 5731, 5732, 5737	AMS 2700 METHOD 1, TYPE 8
ACR			

WASHER MATERIAL AND FINISH DATA

CODE	MATERIAL	SPEC.	FINISH	SPEC.
CR	A-286 CRES	AMS 5726, 5731, 5732, 5737	PASSIVATE	AMS 2700 METHOD 1, TYPE 8
ACR	2024 OR 6061 ALUMINUM	AMS-QQ-A-200 OR AMS-QQ-A-225	ANODIZE	MIL-A-8625 TYPE I, CLASS 1 - DO NOT SEAL

OPTIONAL PRIMER

CODE	MATERIAL SPEC.
P	MIL-PRF-85582

OPTIONAL TOPCOAT

CODE	MATERIAL SPEC.
F	AMS-C-27725 TYPE 2 YELLOW

INSTALLATION HOLE SIZE

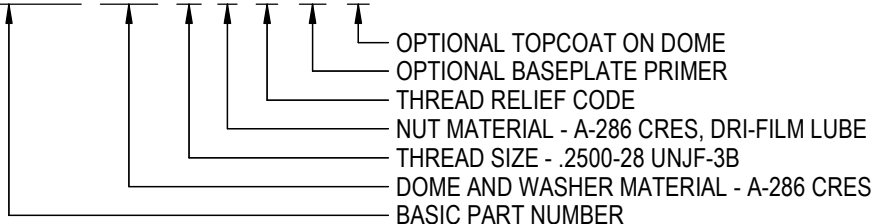
SIZE	Ø U
08	.164 - .204
3	.190 - .230
4	.250 - .290
5	.312 - .353
6	.375 - .415
7	.437 - .478
8	.500 - .540

PART NUMBER SUFFIXES

CODE	DESCRIPTION
NL	NON-LOCKING NUT ELEMENT
R	THREAD LOCK MEETS NASM25027 REUSE REQUIREMENTS FOR 50 REUSE CYCLES

EXAMPLE PART NUMBER

CB6008 CR 4 - 2 P F



UNLESS OTHERWISE SPECIFIED, ALL DIMENSIONS ARE IN INCHES AND TOLERANCES ARE AS SHOWN BELOW. DIMENSIONAL TOLERANCES AND SYMBOLS PER ANSI Y14.5M-1982.

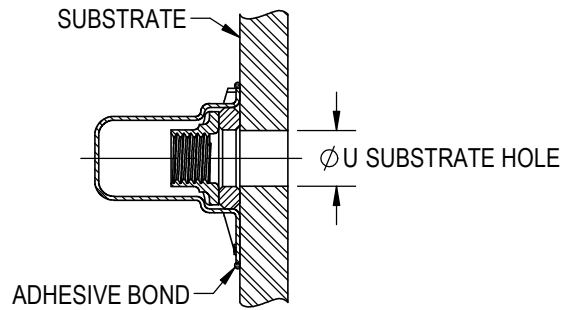


2151 LOCKHEED WAY
CARSON CITY, NEVADA 89706

TITLE
NUTPLATE, FLOATING, SEALED, ONE LUG

ANGLES	±1°
.XX	±.03
.XXX	±.010
.XXXX	±.001

SIZE	CAGE CODE	DWG. NO.	REV.
A	66530	CB6008	9
SCALE: 1:1		1MAY20	SHEET 2 OF 4



NUT MATERIAL AND FINISH DATA

CODE	MATERIAL	SPEC.	FINISH	SPEC.	DRI-FILM LUBE
NONE	A-286 CRES	AMS 5525, 5726, 5731, 5732, 5737	PASSIVATE	AMS 2700 METHOD 1, TYPE 8	AS5272 TYPE I OR II
CRC			CAD PLATE	AMS-QQ-P-416 TY II, CL 2	

DOMe MATERIAL AND FINISH DATA

CODE	MATERIAL	SPEC.	PASSIVATE
CR	A-286 CRES	AMS 5525, 5726, 5731, 5732, 5737	AMS 2700 METHOD 1, TYPE 8
ACR			

WASHER MATERIAL AND FINISH DATA

CODE	MATERIAL	SPEC.	FINISH	SPEC.
CR	A-286 CRES	AMS 5726, 5731, 5732, 5737	PASSIVATE	AMS 2700 METHOD 1, TYPE 8
ACR	2024 OR 6061 ALUMINUM	AMS-QQ-A-200 OR AMS-QQ-A-225	ANODIZE	MIL-A-8625 TYPE I, CLASS 1 - DO NOT SEAL

OPTIONAL PRIMER

CODE	MATERIAL SPEC.
P	MIL-PRF-85582

OPTIONAL TOPCOAT

CODE	MATERIAL SPEC.
F	AMS-C-27725 TYPE 2 YELLOW

INSTALLATION HOLE SIZE

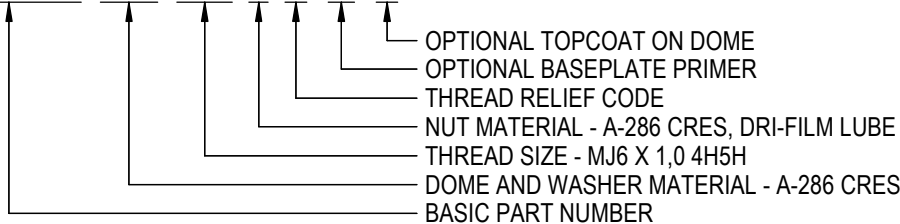
SIZE	Ø U
4M	4,0 - 5,0
5M	5,0 - 6,0
6M	6,0 - 7,0
8M	8,0 - 9,0

PART NUMBER SUFFIXES

CODE	DESCRIPTION
NL	NON-LOCKING NUT ELEMENT
R	THREAD LOCK MEETS ISO5858 REUSE REQUIREMENTS FOR 50 REUSE CYCLES

EXAMPLE PART NUMBER

CB6008 CR 6M 3 P F



UNLESS OTHERWISE SPECIFIED, ALL DIMENSIONS ARE IN MILLIMETERS AND TOLERANCES ARE AS SHOWN BELOW. DIMENSIONAL TOLERANCES AND SYMBOLS PER ANSI Y14.5M-1982.



2151 LOCKHEED WAY
CARSON CITY, NEVADA 89706

METRIC DIMENSIONS

TITLE
NUTPLATE, FLOATING, SEALED, ONE LUG

ANGLES	±1°	SIZE	A	CAGE CODE	66530	DWG. NO.	CB6008 (METRIC)	REV.	9
X	±0,8	SCALE: 1:1		1MAY20		SHEET 4 OF 4			
.XX	±0,25								