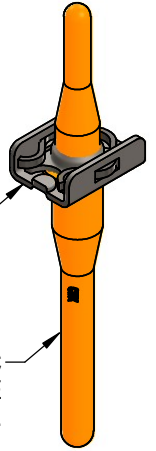


NUTPLATE MEETS THE STRENGTH AND REUSABILITY REQUIREMENTS OF NASM25027.
BASEPLATE

NUTPLATE ATTACHED BY ADHESIVE APPLIED TO THIS SURFACE.

DISPOSABLE ELASTIC FIXTURE HOLDS NUTPLATE WHILE ADHESIVE CURES.



THREAD AND DIMENSION DATA (ALL DIMENSIONS BEFORE PAINT)

PART NUMBER	THREAD SIZE	A	B MAX	D MIN	H MAX	R MIN	WEIGHT * LB/100
CB6003CR08()1	.1640-32 UNJC-3B	.570 .555	.454	.224	.250	.070	.52
CB6003CR3()1	.1900-32 UNJF-3B	.570 .555	.454	.250	.250	.070	.55
CB6003CR3()2					.312	.125	.60
CB6003CR3()3					.375	.188	.65
CB6003CR3()4					.438	.250	.72
CB6003CR3()5					.500	.313	.76
CB6003CR3()6					.562	.375	.81
CB6003CR4()1	.2500-28 UNJF-3B	.720 .705	.554	.312	.295	.070	1.01
CB6003CR4()2					.357	.125	1.06
CB6003CR4()3					.419	.188	1.10
CB6003CR4()4					.481	.250	1.19
CB6003CR4()5					.543	.313	1.28
CB6003CR4()6					.605	.375	1.38
CB6003CR5()1	.3125-24 UNJF-3B	.820 .805	.650	.375	.344	.070	1.41
CB6003CR5()2					.400	.125	1.47
CB6003CR5()3					.461	.188	1.58
CB6003CR5()4					.524	.250	1.70
CB6003CR5()5					.586	.313	1.81
CB6003CR5()6					.649	.375	1.92
CB6003CR6()1	.3750-24 UNJF-3B	.920 .905	.750	.437	.380	.070	2.37
CB6003CR6()2					.430	.125	2.49
CB6003CR7()1	.4375-20 UNJF-3B	1.100 1.085	.840	.500	.500	.070	3.90
CB6003CR8()1	.5000-20 UNJF-3B	1.146 1.131	.900	.562	.580	.070	4.37

* APPROXIMATE WEIGHT WITHOUT INSTALLATION FIXTURE

UNLESS OTHERWISE SPECIFIED, ALL DIMENSIONS ARE IN INCHES AND TOLERANCES ARE AS SHOWN BELOW. DIMENSIONAL TOLERANCES AND SYMBOLS PER ANSI Y14.5M-1982.

THE PARTS SHOWN IN THIS DRAWING ARE PROPRIETARY AND MAY BE THE SUBJECT OF ISSUED UNITED STATES AND FOREIGN PATENTS AND PATENTS PENDING. UNAUTHORIZED REPRODUCTION AND/OR DISTRIBUTION OF THIS DRAWING IS SPECIFICALLY PROHIBITED.

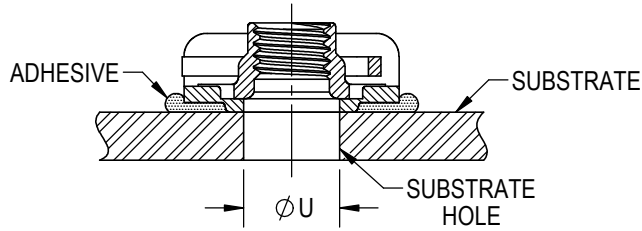


2151 LOCKHEED WAY
CARSON CITY, NEVADA 89706

APPROVALS		DATE		TITLE			
ANGLES	±1°	DRAWN	GTP	NUTPLATE, NO LUG, ADHESIVE BONDED			
.XX	±.03	CHECKED	<i>D. Carter</i>	SIZE	CAGE CODE	DWG. NO.	REV.
.XXX	±.010	RELEASED	JLH	A	66530	CB6003	1
.XXXX	±.001	REVISED	GTP	SCALE: 2:1		12FEB20	SHEET 1 OF 4

INSTALLATION HOLE SIZE

SIZE	ØU
08	.164 - .224
3	.190 - .250
4	.250 - .312
5	.312 - .375
6	.375 - .437
7	.437 - .500
8	.500 - .562



BASEPLATE MATERIAL AND FINISH DATA

CODE	MATERIAL	SPEC.	PASSIVATE
CR	A-286 CRES	AMS 5525	AMS 2700

OPTIONAL BASEPLATE PRIMER

CODE	MATERIAL SPEC.
P	MIL-PRF-85582

NUT MATERIAL AND FINISH DATA (SEE CB6001)

CODE	MATERIAL	FINISH	SPEC.	DRI-FILM LUBE	REUSABILITY TEST BOLT
-	A-286 CRES	PASSIVATE	AMS 2700	AS5272	CRES
CRC		CADMIUM PLATE	AMS-QQ-P-416		
CRS		SILVER PLATE	AMS 2410	NONE	
CRT		COPPER PLATE	AMS 2418	AS5272	

RETAINING CLIP MATERIAL AND FINISH DATA (SEE CB6002)

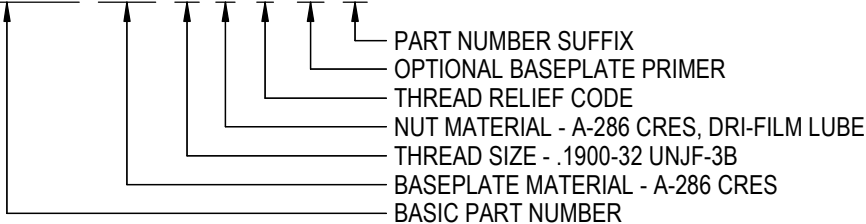
MATERIAL	SPEC.	PASSIVATE
XM-28 (UNS S24100) STAINLESS STEEL SPRING WIRE	ASTM A313/A313M	AMS 2700

PART NUMBER SUFFIXES

CODE	DESCRIPTION
NL	NON-LOCKING NUT ELEMENT
R	THREAD LOCK MEETS NASM25027 REUSE REQUIREMENTS FOR 50 REUSE CYCLES

EXAMPLE PART NUMBER

CB6003 CR 3 - 1 P



UNLESS OTHERWISE SPECIFIED, ALL DIMENSIONS ARE IN INCHES AND TOLERANCES ARE AS SHOWN BELOW. DIMENSIONAL TOLERANCES AND SYMBOLS PER ANSI Y14.5M-1982.

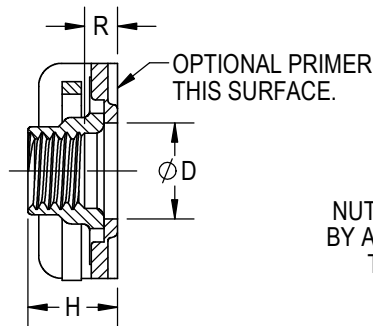
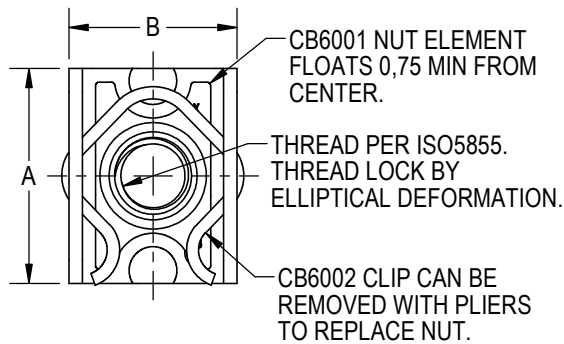


2151 LOCKHEED WAY
CARSON CITY, NEVADA 89706

TITLE
NUTPLATE, NO LUG, ADHESIVE BONDED

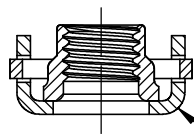
ANGLES	±1°
.XX	±.03
.XXX	±.010
.XXXX	±.001

SIZE	CAGE CODE	DWG. NO.	REV.
A	66530	CB6003	1
SCALE: 2:1		12FEB20	SHEET 2 OF 4



NUTPLATE ATTACHED BY ADHESIVE APPLIED TO THIS SURFACE.

DISPOSABLE ELASTIC FIXTURE HOLDS NUTPLATE WHILE ADHESIVE CURES.



NUTPLATE MEETS THE STRENGTH AND REUSABILITY REQUIREMENTS OF ISO5858 (900 MPa).

BASEPLATE

THREAD AND DIMENSION DATA (ALL DIMENSIONS BEFORE PAINT)

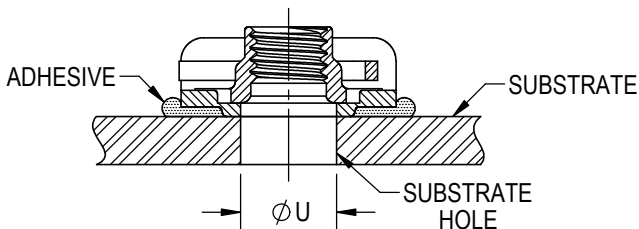
PART NUMBER	THREAD SIZE	A	B MAX	D MIN	H MAX	R MIN	MASS * grams
CB6003CR4M()1	MJ4 X 0,7 4H6H	14,5 14,1	11,6	5,50	5,2	1,6	2,3
CB6003CR5M()1	MJ5 X 0,8 4H6H	14,5 14,1	11,6	6,35	6,2	1,6	2,5
CB6003CR5M()4					8,0	4,0	2,8
CB6003CR5M()6					10,0	6,0	3,1
CB6003CR5M()8					12,0	8,0	3,4
CB6003CR5M()10					14,0	10,0	3,7
CB6003CR5M()12					16,0	12,0	4,0
CB6003CR6M()1	MJ6 X 1,0 4H5H	18,3 17,9	14,1	7,50	7,1	1,6	4,4
CB6003CR6M()4					9,0	4,0	4,9
CB6003CR6M()6					11,0	6,0	5,4
CB6003CR6M()8					13,0	8,0	5,9
CB6003CR6M()10					15,0	10,0	6,4
CB6003CR6M()12					17,0	12,0	6,9
CB6003CR8M()1	MJ8 X 1,0 4H5H	20,9 20,4	16,6	9,50	8,2	1,6	6,6
CB6003CR8M()4					11,0	4,0	7,2
CB6003CR8M()6					13,0	6,0	7,9
CB6003CR8M()8					15,0	8,0	8,5
CB6003CR8M()10					17,0	10,0	9,1
CB6003CR8M()12					19,0	12,0	9,8
CB6003CR10M()1	MJ10 X 1,25 4H5H	23,4 22,9	19,1	11,10	9,9	1,6	11,2

* APPROXIMATE MASS WITHOUT INSTALLATION FIXTURE

UNLESS OTHERWISE SPECIFIED, ALL DIMENSIONS ARE IN MILLIMETERS AND TOLERANCES ARE AS SHOWN BELOW. DIMENSIONAL TOLERANCES AND SYMBOLS PER ANSI Y14.5M-1982.		CLICK BOND		2151 LOCKHEED WAY CARSON CITY, NEVADA 89706	
METRIC DIMENSIONS				TITLE NUTPLATE, NO LUG, ADHESIVE BONDED	
ANGLES	±1°	SIZE	CAGE CODE	DWG. NO.	REV.
X	±0,8	A	66530	CB6003 (METRIC)	1
.XX	±0,25	SCALE: 2:1		12FEB20	SHEET 3 OF 4

INSTALLATION HOLE SIZE

SIZE	ØU
4M	4,00 - 5,50
5M	5,00 - 6,35
6M	6,00 - 7,50
8M	8,00 - 9,50
10M	10,00 - 11,10



BASEPLATE MATERIAL AND FINISH DATA

CODE	MATERIAL	SPEC.	PASSIVATE
CR	A-286 CRES	AMS 5525	AMS 2700

OPTIONAL BASEPLATE PRIMER

CODE	MATERIAL	SPEC.
P	MIL-PRF-85582	

NUT MATERIAL AND FINISH DATA (SEE CB6001)

CODE	MATERIAL	FINISH	SPEC.	DRI-FILM LUBE
NONE		PASSIVATE	AMS 2700	AS5272
CRC	A-286 CRES	CADMIUM PLATE	AMS-QQ-P-416	
CRS		SILVER PLATE	AMS 2410	NONE

RETAINING CLIP MATERIAL AND FINISH DATA (SEE CB6002)

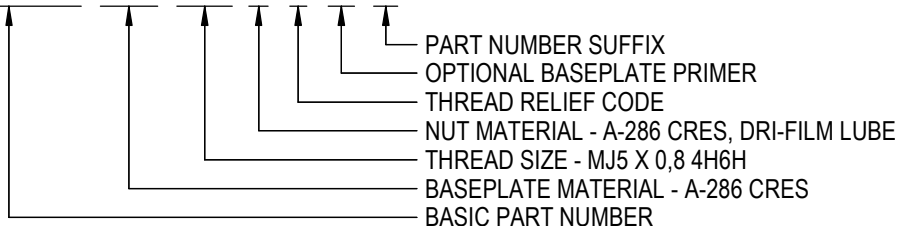
MATERIAL	SPEC.	PASSIVATE
XM-28 (UNS S24100) STAINLESS STEEL SPRING WIRE	ASTM A313/A313M	AMS 2700

PART NUMBER SUFFIXES

CODE	DESCRIPTION
NL	NON-LOCKING NUT ELEMENT
R	THREAD LOCK MEETS ISO5858 REUSE REQUIREMENTS FOR 50 REUSE CYCLES

EXAMPLE PART NUMBER

CB6003 CR 5M 1 P



UNLESS OTHERWISE SPECIFIED, ALL DIMENSIONS ARE IN MILLIMETERS AND TOLERANCES ARE AS SHOWN BELOW. DIMENSIONAL TOLERANCES AND SYMBOLS PER ANSI Y14.5M-1982.



2151 LOCKHEED WAY
CARSON CITY, NEVADA 89706

METRIC DIMENSIONS

TITLE
NUTPLATE, NO LUG, ADHESIVE BONDED

ANGLES	±1°	SIZE	A	CAGE CODE	66530	DWG. NO.	CB6003 (METRIC)	REV.	1
.X	±0,8	SCALE: 2:1		12FEB20		SHEET 4 OF 4			
.XX	±0,25								