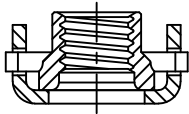


NUTPLATE ATTACHED BY ADHESIVE APPLIED TO THIS SURFACE.

DISPOSABLE ELASTIC FIXTURE HOLDS NUTPLATE WHILE ADHESIVE CURES.



NUTPLATE MEETS THE STRENGTH AND REUSABILITY REQUIREMENTS OF NASM25027.

THREAD AND DIMENSION DATA (ALL DIMENSIONS BEFORE PAINT)

| PART NUMBER     | THREAD SIZE      | A MAX | B MAX | D MIN | E MAX | H MAX | R MIN | WEIGHT * (A-286 CRES) LB/100 | WEIGHT * (ALUMINUM) LB/100 |
|-----------------|------------------|-------|-------|-------|-------|-------|-------|------------------------------|----------------------------|
| CB6011( )08( )1 | .1640-32 UNJC-3B | .745  | .454  | .224  | .285  | .250  | .070  | .60                          | .37                        |
| CB6011( )3( )1  | .1900-32 UNJF-3B | .745  | .454  | .250  | .285  | .250  | .070  | .63                          | .40                        |
| CB6011( )3( )2  |                  |       |       |       |       | .312  | .125  | .68                          | .45                        |
| CB6011( )3( )3  |                  |       |       |       |       | .375  | .188  | .73                          | .50                        |
| CB6011( )3( )4  |                  |       |       |       |       | .438  | .250  | .80                          | .57                        |
| CB6011( )3( )5  |                  |       |       |       |       | .500  | .313  | .84                          | .61                        |
| CB6011( )3( )6  |                  |       |       |       |       | .562  | .375  | .89                          | .66                        |
| CB6011( )4( )1  | .2500-28 UNJF-3B | .948  | .554  | .312  | .360  | .295  | .070  | 1.14                         | .72                        |
| CB6011( )4( )2  |                  |       |       |       |       | .357  | .125  | 1.19                         | .77                        |
| CB6011( )4( )3  |                  |       |       |       |       | .419  | .188  | 1.23                         | .81                        |
| CB6011( )4( )4  |                  |       |       |       |       | .481  | .250  | 1.32                         | .90                        |
| CB6011( )4( )5  |                  |       |       |       |       | .543  | .313  | 1.41                         | .99                        |
| CB6011( )4( )6  |                  |       |       |       |       | .605  | .375  | 1.51                         | 1.09                       |
| CB6011( )5( )1  | .3125-24 UNJF-3B | 1.042 | .650  | .375  | .410  | .344  | .070  | 1.60                         | 1.06                       |
| CB6011( )5( )2  |                  |       |       |       |       | .400  | .125  | 1.66                         | 1.12                       |
| CB6011( )5( )3  |                  |       |       |       |       | .461  | .188  | 1.77                         | 1.23                       |
| CB6011( )5( )4  |                  |       |       |       |       | .524  | .250  | 1.89                         | 1.35                       |
| CB6011( )5( )5  |                  |       |       |       |       | .586  | .313  | 2.00                         | 1.46                       |
| CB6011( )5( )6  |                  |       |       |       |       | .649  | .375  | 2.11                         | 1.57                       |
| CB6011( )6( )1  | .3750-24 UNJF-3B | 1.182 | .750  | .437  | .460  | .380  | .070  | 2.62                         | 1.65                       |
| CB6011( )6( )2  |                  |       |       |       |       | .430  | .125  | 2.74                         | 1.77                       |
| CB6011( )7( )1  | .4375-20 UNJF-3B | 1.307 | .840  | .500  | .510  | .500  | .070  | 4.00                         | 2.90                       |
| CB6011( )8( )1  | .5000-20 UNJF-3B | 1.432 | .900  | .562  | .573  | .580  | .070  | 4.65                         | 3.30                       |

\* APPROXIMATE WEIGHT WITHOUT INSTALLATION FIXTURE (BASEPLATE MATERIAL IN PARENTHESIS)

UNLESS OTHERWISE SPECIFIED, ALL DIMENSIONS ARE IN INCHES AND TOLERANCES ARE AS SHOWN BELOW. DIMENSIONAL TOLERANCES AND SYMBOLS PER ANSI Y14.5M-1982.

PROPRIETARY PARTS SHOWN IN THIS DRAWING ARE THE SUBJECT OF ISSUED UNITED STATES AND FOREIGN PATENTS AND PATENTS PENDING. UNAUTHORIZED REPRODUCTION AND/OR DISTRIBUTION OF THIS DRAWING IS SPECIFICALLY PROHIBITED.



CARSON CITY NEVADA 89706

CAD CB6011-1

APPROVALS DATE

TITLE NUTPLATE, ONE LUG, ADHESIVE BONDED

ANGLES ±1°

DRAWN DAC 17OCT03

SIZE A CAGE CODE 66530 DWG. NO. CB6011 REV. 15

.XX ±.03

CHECKED DAC 17AUG22

.XXX ±.010

RELEASED RDH 17AUG22

.XXXX ±.001

REVISED DAC 17AUG22

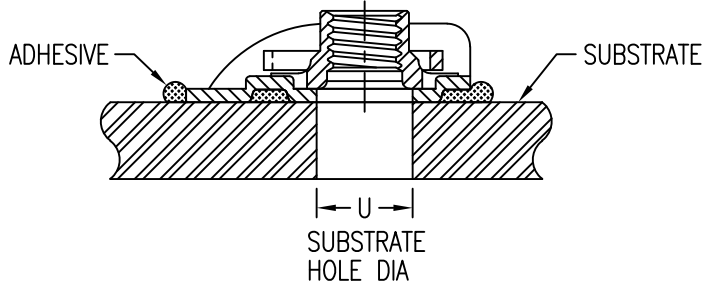
SCALE 2/1 17AUG22 SHEET 1 OF 4

INSTALLATION HOLE SIZE

| SIZE | U DIA     |
|------|-----------|
| 08   | .164-.224 |
| 3    | .190-.250 |
| 4    | .250-.312 |
| 5    | .312-.375 |
| 6    | .375-.437 |
| 7    | .437-.500 |
| 8    | .500-.562 |

BF SUFFIX OVERSIZE HOLE

| CODE | U DIA     |
|------|-----------|
| 08   | .224-.286 |
| 3    | .250-.312 |
| 4    | .312-.375 |
| 5    | .375-.437 |



BASEPLATE MATERIAL AND FINISH DATA

| CODE | MATERIAL   | SPEC.        | FINISH    | SPEC.                                 |
|------|------------|--------------|-----------|---------------------------------------|
| A    | ALUMINUM   | AMS-QQ-A-250 | NONE      |                                       |
| AA   | ALUMINUM   | AMS-QQ-A-250 | ANODIZE   | MIL-PRF-8625 TYPE I, CLASS 1, NO SEAL |
| CR   | A-286 CRES | AMS 5525     | PASSIVATE | AMS 2700 METHOD 1, TYPE 8             |

NUT MATERIAL AND FINISH DATA (SEE CB6001)

| CODE | MATERIAL   | FINISH        | SPEC.        | LUBRICATION   |
|------|------------|---------------|--------------|---------------|
| -    | A-286 CRES | PASSIVATE     | AMS 2700     | DRI-FILM LUBE |
| CRC  | A-286 CRES | CADMIUM PLATE | AMS-QQ-P-416 | DRI-FILM LUBE |
| CRS  | A-286 CRES | SILVER PLATE  | AMS 2410     | NONE          |

RETAINING CLIP MATERIAL AND FINISH DATA (SEE CB6002)

| MATERIAL                                       | SPEC.           | PASSIVATE |
|--|-----------------|-----------|
| XM-28 (UNS S24100) STAINLESS STEEL SPRING WIRE | ASTM A313/A313M | AMS 2700  |

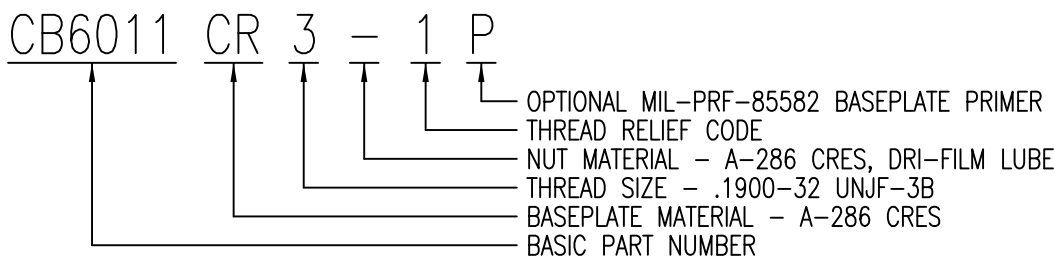
PART NUMBER SUFFIXES

| CODE | DESCRIPTION  |
|------|--|
| NL   | NON-LOCKING NUT ELEMENT  |
| R    | THREAD LOCK MEETS NASM25027 REUSE REQUIREMENTS FOR 50 REUSE CYCLES<br>MANUFACTURER'S OPTION: COPPER PLATE PER AMS 2418 |
| BF   | FIXTURE FOR OVERSIZE INSTALLATION HOLE (SIZES 08 - 5 ONLY)   |

NOTES: (PART NUMBER CHANGE 18NOV96, NUTPLATE DESIGN SAME)

- PART NUMBER CB6011( )2( )1 IS INACTIVE FOR NEW DESIGN, USE CB6011( )08( )1.
- NUT MATERIAL AND FINISH CODE "CR" IS INACTIVE FOR NEW DESIGN, USE CODE "-".

EXAMPLE PART NUMBER



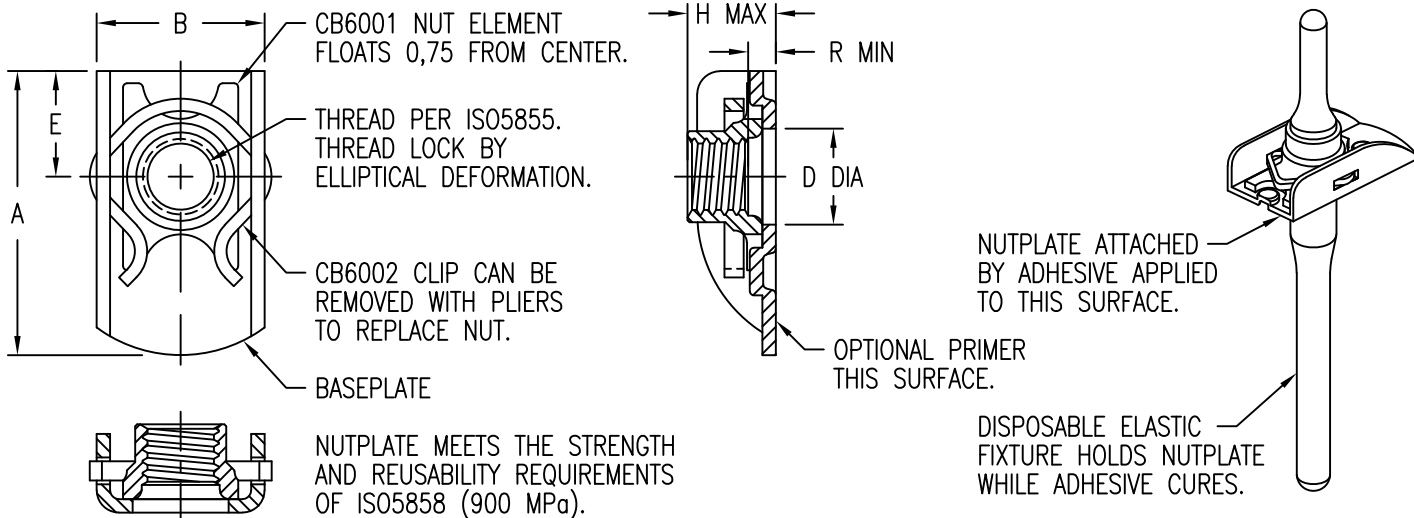
UNLESS OTHERWISE SPECIFIED, ALL DIMENSIONS ARE IN INCHES AND TOLERANCES ARE AS SHOWN BELOW. DIMENSIONAL TOLERANCES AND SYMBOLS PER ANSI Y14.5M-1982.

PROPRIETARY PARTS SHOWN IN THIS DRAWING ARE THE SUBJECT OF ISSUED UNITED STATES AND FOREIGN PATENTS AND PATENTS PENDING. UNAUTHORIZED REPRODUCTION AND/OR DISTRIBUTION OF THIS DRAWING IS SPECIFICALLY PROHIBITED.

**GLICK BOND**

CARSON CITY  
NEVADA 89706

|              |       |           |         |         |                                    |           |          |              |
|--------------|-------|-----------|---------|---------|------------------------------------|-----------|----------|--------------|
| CAD CB6011-2 |       | APPROVALS |         | DATE    | TITLE                              |           |          |              |
| ANGLES       | ±1°   | DRAWN     | DAC     | 17OCT03 | NUTPLATE, ONE LUG, ADHESIVE BONDED |           |          |              |
| .XX          | ±.03  | CHECKED   | DAC/mtm | 17AUG22 | SIZE                               | CAGE CODE | DWG. NO. | REV.         |
| .XXX         | ±.010 | RELEASED  | RDH     | 17AUG22 | A                                  | 66530     | CB6011   | 15           |
| .XXXX        | ±.001 | REVISED   | DAC     | 17AUG22 | SCALE                              | 2/1       | 17AUG22  | SHEET 2 OF 4 |



THREAD AND DIMENSION DATA (ALL DIMENSIONS BEFORE PAINT)

| PART NUMBER      | THREAD SIZE      | A<br>MAX | B<br>MAX | D<br>MIN | E<br>MAX | H<br>MAX | R<br>MIN | WEIGHT *<br>(A-286 CRES)<br>GRAMS | WEIGHT *<br>(ALUMINUM)<br>GRAMS |
|------------------|------------------|----------|----------|----------|----------|----------|----------|-----------------------------------|---------------------------------|
| CB6011( )4M( )1  | MJ4 X 0,7 4H6H   | 19,0     | 11,6     | 5,50     | 7,3      | 5,2      | 1,6      | 2,8                               | 1,7                             |
| CB6011( )5M( )1  |                  |          |          |          |          | 6,2      | 1,6      | 2,9                               | 1,8                             |
| CB6011( )5M( )4  | MJ5 X 0,8 4H6H   | 19,0     | 11,6     | 6,35     | 7,3      | 8,0      | 4,0      | 3,3                               | 2,1                             |
| CB6011( )5M( )6  |                  |          |          |          |          | 10,0     | 6,0      | 3,6                               | 2,4                             |
| CB6011( )5M( )8  |                  |          |          |          |          | 12,0     | 8,0      | 3,9                               | 2,7                             |
| CB6011( )5M( )10 |                  |          |          |          |          | 14,0     | 10,0     | 4,2                               | 3,0                             |
| CB6011( )5M( )12 |                  |          |          |          |          | 16,0     | 12,0     | 4,5                               | 3,3                             |
| CB6011( )6M( )1  | MJ6 X 1,0 4H5H   | 24,1     | 14,1     | 7,50     | 9,2      | 7,1      | 1,6      | 5,0                               | 3,2                             |
| CB6011( )6M( )4  |                  |          |          |          |          | 9,0      | 4,0      | 5,5                               | 3,7                             |
| CB6011( )6M( )6  |                  |          |          |          |          | 11,0     | 6,0      | 6,0                               | 4,2                             |
| CB6011( )6M( )8  |                  |          |          |          |          | 13,0     | 8,0      | 6,5                               | 4,7                             |
| CB6011( )6M( )10 |                  |          |          |          |          | 15,0     | 10,0     | 7,0                               | 5,2                             |
| CB6011( )6M( )12 |                  |          |          |          |          | 17,0     | 12,0     | 7,5                               | 5,7                             |
| CB6011( )8M( )1  | MJ8 X 1,0 4H5H   | 26,5     | 16,6     | 9,50     | 10,5     | 8,2      | 1,6      | 7,3                               | 4,7                             |
| CB6011( )8M( )4  |                  |          |          |          |          | 11,0     | 4,0      | 7,9                               | 5,3                             |
| CB6011( )8M( )6  |                  |          |          |          |          | 13,0     | 6,0      | 8,6                               | 6,0                             |
| CB6011( )8M( )8  |                  |          |          |          |          | 15,0     | 8,0      | 9,2                               | 6,6                             |
| CB6011( )8M( )10 |                  |          |          |          |          | 17,0     | 10,0     | 9,8                               | 7,2                             |
| CB6011( )8M( )12 |                  |          |          |          |          | 19,0     | 12,0     | 10,5                              | 7,9                             |
| CB6011( )10M( )1 | MJ10 X 1,25 4H5H | 30,1     | 19,1     | 11,10    | 11,7     | 9,9      | 1,6      | 12,7                              | 8,3                             |

\* APPROXIMATE WEIGHT WITHOUT INSTALLATION FIXTURE (BASEPLATE MATERIAL IN PARENTHESIS)

UNLESS OTHERWISE SPECIFIED, ALL DIMENSIONS ARE IN MILLIMETERS AND TOLERANCES ARE AS SHOWN BELOW. DIMENSIONAL TOLERANCES AND SYMBOLS PER ANSI Y14.5M-1982.

PROPRIETARY PARTS SHOWN IN THIS DRAWING ARE THE SUBJECT OF ISSUED UNITED STATES AND FOREIGN PATENTS AND PATENTS PENDING. UNAUTHORIZED REPRODUCTION AND/OR DISTRIBUTION OF THIS DRAWING IS SPECIFICALLY PROHIBITED.



CARSON CITY  
NEVADA 89706

CAD CB6011-3  
METRIC DIMENSIONS

| APPROVALS          | DATE    |
|--------------------|---------|
| DRAWN <i>DAC</i>   | 17OCT03 |
| CHECKED <i>DAC</i> | 17AUG22 |
| RELEASED RDH       | 17AUG22 |
| REVISED <i>DAC</i> | 17AUG22 |

TITLE  
NUTPLATE, ONE LUG, ADHESIVE BONDED

|        |       |
|--------|-------|
| ANGLES | ±1°   |
| .X     | ±0,8  |
| .XX    | ±0,25 |

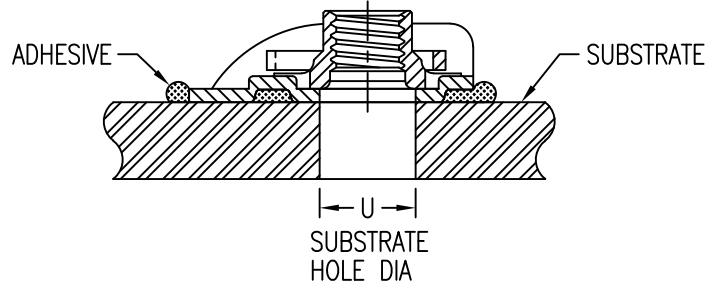
|              |           |                 |         |
|--------------|-----------|-----------------|---------|
| SIZE         | CAGE CODE | DWG. NO.        | REV.    |
| A            | 66530     | CB6011 (METRIC) | 15      |
| SCALE        | 2/1       |                 | 17AUG22 |
| SHEET 3 OF 4 |           |                 |         |

INSTALLATION HOLE SIZE

| SIZE | U DIA       |
|------|-------------|
| 4M   | 4,00-5,50   |
| 5M   | 5,00-6,35   |
| 6M   | 6,00-7,50   |
| 8M   | 8,00-9,50   |
| 10M  | 10,00-11,10 |

BF SUFFIX OVERSIZE HOLE

| CODE | U DIA      |
|------|------------|
| 4M   | 5,50-7,00  |
| 5M   | 6,35-7,85  |
| 6M   | 7,50-9,00  |
| 8M   | 9,50-11,00 |



BASEPLATE MATERIAL AND FINISH DATA

| CODE | MATERIAL   | SPEC.        | FINISH    | SPEC.                                 |
|------|------------|--------------|-----------|---------------------------------------|
| A    | ALUMINUM   | AMS-QQ-A-250 | NONE      |                                       |
| AA   | ALUMINUM   | AMS-QQ-A-250 | ANODIZE   | MIL-PRF-8625 TYPE I, CLASS 1, NO SEAL |
| CR   | A-286 CRES | AMS 5525     | PASSIVATE | AMS 2700 METHOD 1, TYPE 8             |

NUT MATERIAL AND FINISH DATA (SEE CB6001)

| CODE | MATERIAL   | FINISH        | SPEC.        | LUBRICATION   |
|------|------------|---------------|--------------|---------------|
| NONE | A-286 CRES | PASSIVATE     | AMS 2700     | DRI-FILM LUBE |
| CRC  | A-286 CRES | CADMIUM PLATE | AMS-QQ-P-416 | DRI-FILM LUBE |
| CRS  | A-286 CRES | SILVER PLATE  | AMS 2410     | NONE          |

RETAINING CLIP MATERIAL AND FINISH DATA (SEE CB6002)

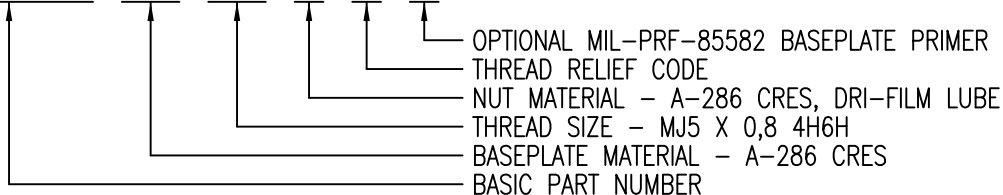
| MATERIAL                                       | SPEC.           | PASSIVATE |
|--|-----------------|-----------|
| XM-28 (UNS S24100) STAINLESS STEEL SPRING WIRE | ASTM A313/A313M | AMS 2700  |

PART NUMBER SUFFIXES

| CODE | DESCRIPTION  |
|------|--|
| NL   | NON-LOCKING NUT ELEMENT  |
| R    | THREAD LOCK MEETS ISO5858 REUSE REQUIREMENTS FOR 50 REUSE CYCLES<br>MANUFACTURER'S OPTION: COPPER PLATE PER AMS 2418 |
| BF   | FIXTURE FOR OVERSIZE INSTALLATION HOLE (SIZES 4M - 8M ONLY)  |

EXAMPLE PART NUMBER

CB6011 CR 5M 1 P



UNLESS OTHERWISE SPECIFIED, ALL DIMENSIONS ARE IN MILLIMETERS AND TOLERANCES ARE AS SHOWN BELOW. DIMENSIONAL TOLERANCES AND SYMBOLS PER ANSI Y14.5M-1982.

PROPRIETARY PARTS SHOWN IN THIS DRAWING ARE THE SUBJECT OF ISSUED UNITED STATES AND FOREIGN PATENTS AND PATENTS PENDING. UNAUTHORIZED REPRODUCTION AND/OR DISTRIBUTION OF THIS DRAWING IS SPECIFICALLY PROHIBITED.



CARSON CITY  
NEVADA 89706

|                                   |       |
|-----------------------------------|-------|
| CAD CB6011-4<br>METRIC DIMENSIONS |       |
| ANGLES                            | ±1°   |
| .X                                | ±0,8  |
| .XX                               | ±0,25 |

| APPROVALS          | DATE    |
|--------------------|---------|
| DRAWN <i>DAC</i>   | 17OCT03 |
| CHECKED <i>DAC</i> | 17AUG22 |
| RELEASED RDH       | 17AUG22 |
| REVISED <i>DAC</i> | 17AUG22 |

|   |                    |                             |            |
|---|--------------------|-----------------------------|------------|
| TITLE<br>NUTPLATE, ONE LUG, ADHESIVE BONDED |                    |                             |            |
| SIZE<br>A                                   | CAGE CODE<br>66530 | DWG. NO.<br>CB6011 (METRIC) | REV.<br>15 |
| SCALE<br>2/1                                | 17AUG22            | SHEET 4 OF 4                |            |