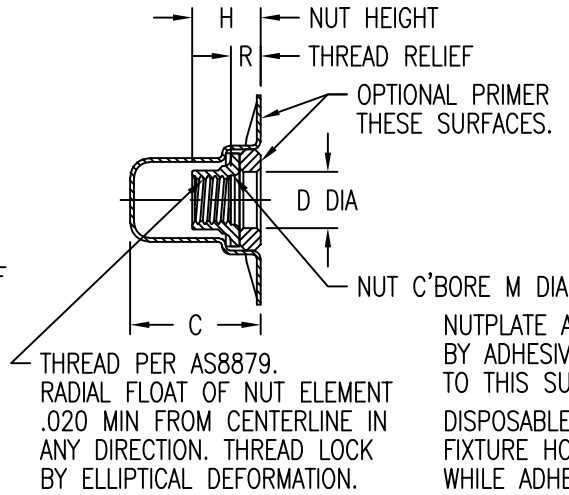
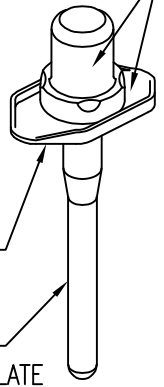


NUTPLATE MEETS THE STRENGTH AND REUSABILITY REQUIREMENTS OF NASM25027.



OPTIONAL TOPCOAT THESE SURFACES.



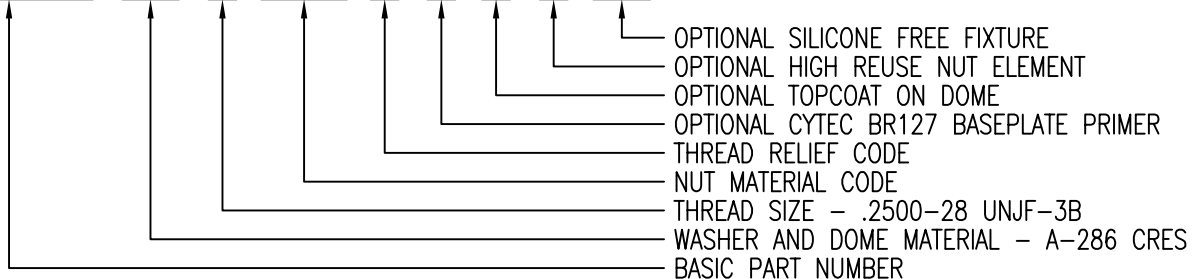
THREAD AND DIMENSION DATA (ALL DIMENSIONS BEFORE PAINT)

PART NUMBER	THREAD SIZE	A MAX	B MAX	C MAX	D MIN	F MAX	H MAX	R MIN	M MIN	WEIGHT * LB/100		
CB8010CR08()2	.1640-32 UNJC-3B	.995	.580	.637	.204	.800	.325	.125	.168	1.10		
CB8010CR3()2				.700			.230	.800		.320	.125	1.07
CB8010CR3()3				.762			.230	.800		.383	.187	1.15
CB8010CR3()4				.825			.230	.800		.445	.250	1.24
CB8010CR3()5				.825			.230	.800		.508	.312	1.34
CB8010CR4()2	.2500-28 UNJF-3B	1.100	.725	.691	.290	.950	.365	.125	.254	1.50		
CB8010CR4()3				.754			.290	.950		.428	.187	1.59
CB8010CR4()4				.816			.290	.950		.490	.250	1.73
CB8010CR4()5				.879			.290	.950		.553	.312	1.85
CB8010CR5()2	.3125-24 UNJF-3B	1.200	.807	.785	.353	1.050	.406	.125	.317	2.28		
CB8010CR6()2	.3750-24 UNJF-3B	1.45	.990	.950	.415	1.24	.430	.125	.379	3.39		
CB8010CR8()2	.5000-20 UNJF-3B	1.95	1.24	1.150	.540	1.70	.640	.125	.504	8.23		

* APPROXIMATE WEIGHT WITHOUT INSTALLATION FIXTURE

EXAMPLE PART NUMBER

CB8010 CR 4 CRT 2 C F R SF



UNLESS OTHERWISE SPECIFIED, ALL DIMENSIONS ARE IN INCHES AND TOLERANCES ARE AS SHOWN BELOW. DIMENSIONAL TOLERANCES AND SYMBOLS PER ANSI Y14.5M-1982.

PROPRIETARY PARTS SHOWN IN THIS DRAWING ARE THE SUBJECT OF ISSUED UNITED STATES AND FOREIGN PATENTS AND PATENTS PENDING. UNAUTHORIZED REPRODUCTION AND/OR DISTRIBUTION OF THIS DRAWING IS SPECIFICALLY PROHIBITED.

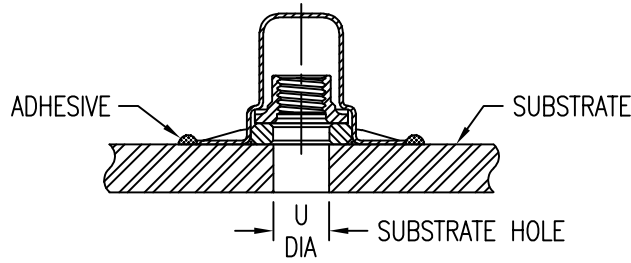
GLICK BOND

CARSON CITY
NEVADA 89706

CAD CB8010-SF-1		APPROVALS	DATE	TITLE			
ANGLES	±1°	DRAWN	DAC	NUTPLATE, SEALED, TWO LUG, OPTIONAL SILICONE FREE FIXTURE			
.XX	±.03	CHECKED	DAC	SIZE	CAGE CODE	DWG. NO.	REV.
.XXX	±.010	RELEASED	JLH	A	66530	CB8010-SF	3
.XXXX	±.001	REVISED	DAC	SCALE	1/1	28MAY21	SHEET 1 OF 2

INSTALLATION HOLE SIZE

THREAD CODE	U DIA
08	.164-.204
3	.190-.230
4	.250-.290
5	.312-.353
6	.375-.415
8	.500-.540



NUT MATERIAL AND FINISH DATA (MANUFACTURER'S OPTION: NICKEL STRIKE FINISH, AND CETYL ALCOHOL AFTER LUBE)

CODE	MATERIAL	SPEC.	FINISH	SPEC.	DRI-FILM LUBE	REUSABILITY TEST BOLT
-	A-286 CRES	AMS 5525, 5726, 5731, 5732, 5737	PASSIVATE	AMS 2700 METHOD 1, TYPE 8	AS5272 TYPE I OR II	CRES
CRT			COPPER PLATE	AMS 2418		TITANIUM

DOME MATERIAL AND FINISH DATA

CODE	MATERIAL	SPEC.	PASSIVATE
CR	A-286 CRES	AMS 5525, 5726, 5731, 5732, 5737	AMS 2700 METHOD 1, TYPE 8

WASHER MATERIAL AND FINISH DATA

CODE	MATERIAL	SPEC.	PASSIVATE
CR	A-286 CRES	AMS 5726, 5731, 5732, 5737	AMS 2700 METHOD 1, TYPE 8

OPTIONAL BASEPLATE PRIMER

CODE	MATERIAL SPEC.
C	CYTEC BR127 PRIMER

OPTIONAL TOPCOAT

CODE	MATERIAL SPEC.
F	AMS-C-27725 TYPE 2 YELLOW

PART NUMBER SUFFIXES

CODE	DESCRIPTION
R	OPTIONAL HIGH REUSE NUT ELEMENT (50 REUSE CYCLES)
SF	OPTIONAL SILICONE FREE FIXTURE

UNLESS OTHERWISE SPECIFIED, ALL DIMENSIONS ARE IN INCHES AND TOLERANCES ARE AS SHOWN BELOW. DIMENSIONAL TOLERANCES AND SYMBOLS PER ANSI Y14.5M-1982.

PROPRIETARY PARTS SHOWN IN THIS DRAWING ARE THE SUBJECT OF ISSUED UNITED STATES AND FOREIGN PATENTS AND PATENTS PENDING. UNAUTHORIZED REPRODUCTION AND/OR DISTRIBUTION OF THIS DRAWING IS SPECIFICALLY PROHIBITED.

CLICK BOND

CARSON CITY
NEVADA 89706

CAD CB8010-SF-2

APPROVALS	DATE
DRAWN <i>DAC</i>	10OCT19
CHECKED <i>DAC</i>	28MAY21
RELEASED <i>JLH</i>	28MAY21
REVISED <i>DAC</i>	28MAY21

TITLE			
NUTPLATE, SEALED, TWO LUG, OPTIONAL SILICONE FREE FIXTURE			
SIZE	CAGE CODE	DWG. NO.	REV.
A	66530	CB8010-SF	3
SCALE	1/1	28MAY21	SHEET 2 OF 2