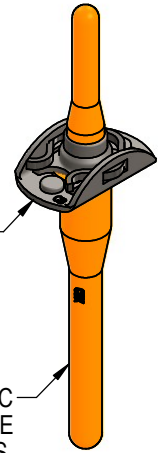


NUTPLATE ATTACHED BY ADHESIVE APPLIED TO THIS SURFACE.

DISPOSABLE ELASTIC FIXTURE HOLDS NUTPLATE WHILE ADHESIVE CURES.



THREAD AND DIMENSION DATA (ALL DIMENSIONS BEFORE PAINT)

| PART NUMBER | THREAD SIZE | A MAX | B MAX | D MIN | H MAX | R MIN | WEIGHT * (A-286 CRES) LB/100 | WEIGHT * (ALUMINUM) LB/100 |
|-----------------|------------------|-------|-------|-------|-------|-------|------------------------------|----------------------------|
| CB8009()08()1 | .1640-32 UNJC-3B | .745 | .454 | .224 | .250 | .070 | .54 | .33 |
| CB8009()08()2 | | | | | .312 | .125 | .58 | .37 |
| CB8009()08()3 | | | | | .375 | .188 | .62 | .41 |
| CB8009()08()4 | | | | | .438 | .250 | .66 | .45 |
| CB8009()3()1 | .1900-32 UNJF-3B | .745 | .454 | .250 | .250 | .070 | .57 | .36 |
| CB8009()3()2 | | | | | .312 | .125 | .62 | .41 |
| CB8009()3()3 | | | | | .375 | .188 | .67 | .46 |
| CB8009()3()4 | | | | | .438 | .250 | .74 | .53 |
| CB8009()3()5 | | | | | .500 | .313 | .78 | .57 |
| CB8009()3()6 | | | | | .562 | .375 | .83 | .62 |
| CB8009()3()7 | | | | | .625 | .438 | .88 | .67 |
| CB8009()3()8 | | | | | .687 | .500 | .93 | .72 |
| CB8009()4()1 | .2500-28 UNJF-3B | .948 | .554 | .312 | .295 | .070 | 1.04 | .69 |
| CB8009()4()2 | | | | | .357 | .125 | 1.09 | .74 |
| CB8009()4()3 | | | | | .419 | .188 | 1.13 | .78 |
| CB8009()4()4 | | | | | .481 | .250 | 1.22 | .87 |
| CB8009()4()5 | | | | | .543 | .313 | 1.31 | .96 |
| CB8009()4()6 | | | | | .605 | .375 | 1.41 | 1.05 |
| CB8009()5()1 | .3125-24 UNJF-3B | 1.042 | .650 | .375 | .344 | .070 | 1.52 | 1.02 |
| CB8009()5()2 | | | | | .400 | .125 | 1.58 | 1.08 |
| CB8009()5()3 | | | | | .461 | .188 | 1.69 | 1.19 |
| CB8009()5()4 | | | | | .524 | .250 | 1.81 | 1.31 |
| CB8009()5()5 | | | | | .586 | .313 | 1.92 | 1.42 |
| CB8009()5()6 | | | | | .649 | .375 | 2.03 | 1.53 |
| CB8009()6()1 | .3750-24 UNJF-3B | 1.182 | .750 | .437 | .380 | .070 | 2.40 | 1.58 |
| CB8009()6()2 | | | | | .430 | .125 | 2.52 | 1.70 |
| CB8009()6()3 | | | | | .500 | .188 | 2.64 | 1.82 |

* APPROXIMATE WEIGHT WITHOUT INSTALLATION FIXTURE (BASEPLATE MATERIAL IN PARENTHESIS)

UNLESS OTHERWISE SPECIFIED, ALL DIMENSIONS ARE IN INCHES AND TOLERANCES ARE AS SHOWN BELOW. DIMENSIONAL TOLERANCES AND SYMBOLS PER ANSI Y14.5M-1982.

THE PARTS SHOWN IN THIS DRAWING ARE PROPRIETARY AND MAY BE THE SUBJECT OF ISSUED UNITED STATES AND FOREIGN PATENTS AND PATENTS PENDING. UNAUTHORIZED REPRODUCTION AND/OR DISTRIBUTION OF THIS DRAWING IS SPECIFICALLY PROHIBITED.



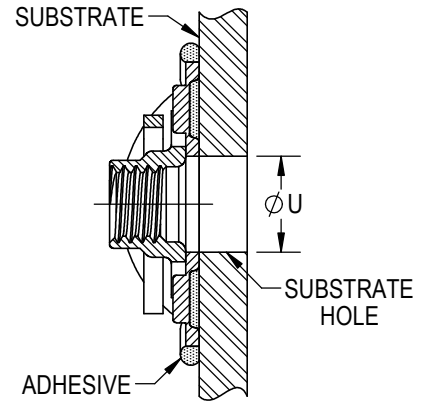
2151 LOCKHEED WAY
CARSON CITY, NEVADA 89706

| | | | | |
|---------------------|---------|------------------------------------|--------------|---------------|
| APPROVALS | DATE | TITLE | | |
| DRAWN GTP | 21AUG19 | NUTPLATE, TWO LUG, ADHESIVE BONDED | | |
| CHECKED <i>DD</i> | 26SEP22 | SIZE | CAGE CODE | DWG. NO. |
| RELEASED <i>RDA</i> | 26SEP22 | A | 66530 | CB8009 |
| REVISED GTP | 26SEP22 | SCALE: 2:1 | 26SEP22 | SHEET 1 OF 4 |

REV. **13**

INSTALLATION HOLE SIZE

| SIZE | ØU |
|------|-------------|
| 08 | .164 - .224 |
| 3 | .190 - .250 |
| 4 | .250 - .312 |
| 5 | .312 - .375 |
| 6 | .375 - .437 |



BASEPLATE MATERIAL AND FINISH DATA

| CODE | MATERIAL | SPEC. | FINISH | SPEC. |
|------|------------|--------------|-----------|---------------------------------------|
| A | ALUMINUM | AMS-QQ-A-250 | NONE | |
| AA | ALUMINUM | AMS-QQ-A-250 | ANODIZE | MIL-PRF-8625 TYPE I, CLASS 1, NO SEAL |
| CR | A-286 CRES | AMS 5525 | PASSIVATE | AMS 2700 METHOD 1, TYPE 8 |

NUT MATERIAL AND FINISH DATA (SEE CB8001)

| CODE | MATERIAL | FINISH | SPEC. | LUBRICATION | REUSABILITY TEST BOLT |
|------|------------|--------------|----------|---------------|-----------------------|
| - | A-286 CRES | PASSIVATE | AMS 2700 | DRI-FILM LUBE | CRES |
| CRT | A-286 CRES | COPPER PLATE | AMS 2418 | | TITANIUM |

RETAINING CLIP MATERIAL AND FINISH DATA (SEE CB8002)

| MATERIAL | SPEC. | PASSIVATE |
|--|-----------------|-----------|
| XM-28 (UNS S24100) STAINLESS STEEL SPRING WIRE | ASTM A313/A313M | AMS 2700 |

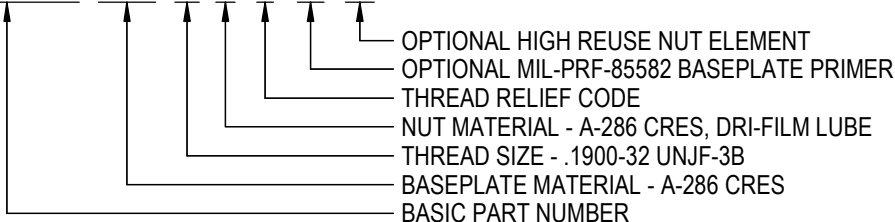
PART NUMBER SUFFIXES


| CODE | DESCRIPTION |
|------|--|
| NL | NON-LOCKING NUT ELEMENT |
| R | THREAD LOCK MEETS NASM25027 REUSE REQUIREMENTS FOR 50 REUSE CYCLES MANUFACTURER'S OPTION: COPPER PLATE PER AMS 2418 |

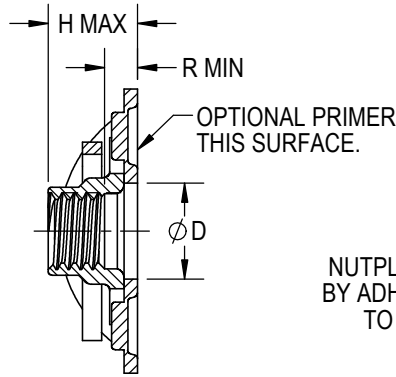
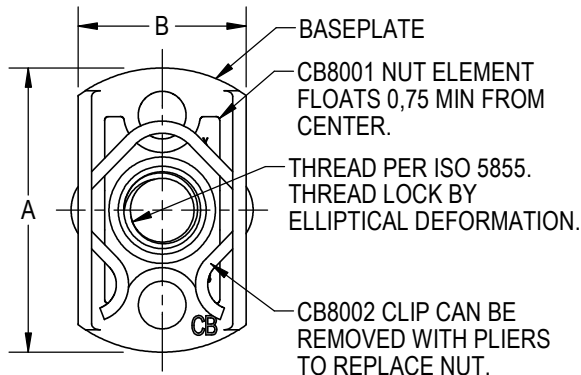
NOTE: PART NUMBER CB8009CR2-1 IS INACTIVE FOR NEW DESIGN, USE CB8009CR08-1 (NUTPLATE DESIGN UNCHANGED)

EXAMPLE PART NUMBER

CB8009 CR 3 - 1 P R

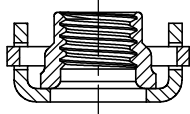
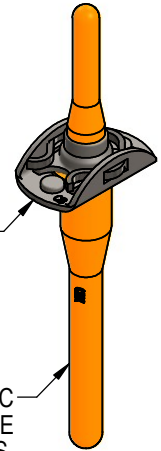


| | | | | | |
|--|-------|---|-----------|--|--------------|
| UNLESS OTHERWISE SPECIFIED, ALL DIMENSIONS ARE IN INCHES AND TOLERANCES ARE AS SHOWN BELOW. DIMENSIONAL TOLERANCES AND SYMBOLS PER ANSI Y14.5M-1982. | |  | | 2151 LOCKHEED WAY CARSON CITY, NEVADA 89706 | |
| ANGLES | ±1° | | | TITLE NUTPLATE, TWO LUG, ADHESIVE BONDED | |
| .XX | ±.03 | SIZE | CAGE CODE | DWG. NO. | REV. |
| .XXX | ±.010 | A | 66530 | CB8009 | 13 |
| .XXXX | ±.001 | SCALE: 2:1 | | 26SEP22 | SHEET 2 OF 4 |



NUTPLATE ATTACHED BY ADHESIVE APPLIED TO THIS SURFACE.

DISPOSABLE ELASTIC FIXTURE HOLDS NUTPLATE WHILE ADHESIVE CURES.



NUTPLATE MEETS THE STRENGTH AND REUSABILITY REQUIREMENTS OF ISO 5858 (900 MPa).

THREAD AND DIMENSION DATA (ALL DIMENSIONS BEFORE PAINT)

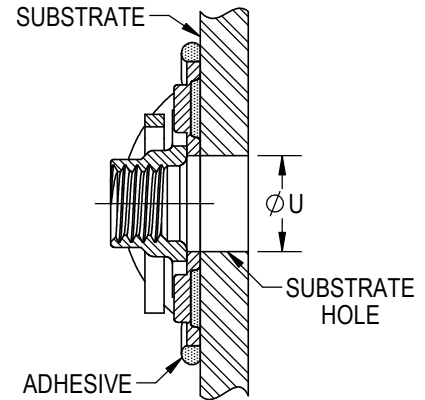
| PART NUMBER | THREAD SIZE | A MAX | B MAX | D MIN | H MAX | R MIN | WEIGHT * (A-286 CRES) grams | WEIGHT * (ALUMINUM) grams |
|---------------|------------------|-------|-------|-------|-------|-------|-----------------------------|---------------------------|
| CB8009()4M | MJ4 X 0,7 4H6H | 19,0 | 11,6 | 5,50 | 5,2 | 1,6 | 2,6 | 1,6 |
| CB8009()5M | MJ5 X 0,8 4H6H | 19,0 | 11,6 | 6,35 | 6,2 | 1,6 | 2,7 | 1,7 |
| CB8009()5M4 | | | | | 8,0 | 4,0 | 3,0 | 2,0 |
| CB8009()5M6 | | | | | 10,0 | 6,0 | 3,3 | 2,3 |
| CB8009()5M8 | | | | | 12,0 | 8,0 | 3,6 | 2,6 |
| CB8009()5M10 | | | | | 14,0 | 10,0 | 3,9 | 2,9 |
| CB8009()5M12 | | | | | 16,0 | 12,0 | 4,2 | 3,2 |
| CB8009()6M | MJ6 X 1,0 4H5H | 24,1 | 14,1 | 7,50 | 7,1 | 1,6 | 4,8 | 3,1 |
| CB8009()6M4 | | | | | 9,0 | 4,0 | 5,3 | 3,7 |
| CB8009()6M6 | | | | | 11,0 | 6,0 | 5,9 | 4,2 |
| CB8009()6M8 | | | | | 13,0 | 8,0 | 6,4 | 4,7 |
| CB8009()6M10 | | | | | 15,0 | 10,0 | 6,9 | 5,3 |
| CB8009()6M12 | | | | | 17,0 | 12,0 | 7,4 | 5,8 |
| CB8009()8M | MJ8 X 1,0 4H5H | 26,5 | 16,6 | 9,50 | 8,2 | 1,6 | 7,1 | 4,7 |
| CB8009()8M4 | | | | | 11,0 | 4,0 | 7,9 | 5,6 |
| CB8009()8M6 | | | | | 13,0 | 6,0 | 8,6 | 6,2 |
| CB8009()8M8 | | | | | 15,0 | 8,0 | 9,2 | 6,9 |
| CB8009()8M10 | | | | | 17,0 | 10,0 | 9,9 | 7,5 |
| CB8009()8M12 | | | | | 19,0 | 12,0 | 10,6 | 8,2 |
| CB8009()10M | MJ10 X 1,25 4H5H | 30,1 | 19,1 | 11,10 | 9,9 | 1,6 | 11,4 | 7,5 |

* APPROXIMATE WEIGHT WITHOUT INSTALLATION FIXTURE (BASEPLATE MATERIAL IN PARENTHESIS)

| | | | | | |
|---|-------|------------|-----------|--|--------------|
| UNLESS OTHERWISE SPECIFIED, ALL DIMENSIONS ARE IN MILLIMETERS AND TOLERANCES ARE AS SHOWN BELOW. DIMENSIONAL TOLERANCES AND SYMBOLS PER ANSI Y14.5M-1982. | | | | 2151 LOCKHEED WAY CARSON CITY, NEVADA 89706 | |
| METRIC DIMENSIONS | | | | TITLE NUTPLATE, TWO LUG, ADHESIVE BONDED | |
| ANGLES | ±1° | SIZE | CAGE CODE | DWG. NO. | REV. |
| X | ±0,8 | A | 66530 | CB8009 (METRIC) | 13 |
| .XX | ±0,25 | SCALE: 2:1 | | 26SEP22 | SHEET 3 OF 4 |

INSTALLATION HOLE SIZE

| SIZE | ØU |
|------|---------------|
| 4M | 4,00 - 5,50 |
| 5M | 5,00 - 6,35 |
| 6M | 6,00 - 7,50 |
| 8M | 8,00 - 9,50 |
| 10M | 10,00 - 11,10 |



BASEPLATE MATERIAL AND FINISH DATA

| CODE | MATERIAL | SPEC. | FINISH | SPEC. |
|------|------------|--------------|-----------|---------------------------------------|
| A | ALUMINUM | AMS-QQ-A-250 | NONE | |
| AA | ALUMINUM | AMS-QQ-A-250 | ANODIZE | MIL-PRF-8625 TYPE I, CLASS 1, NO SEAL |
| CR | A-286 CRES | AMS 5525 | PASSIVATE | AMS 2700 METHOD 1, TYPE 8 |

NUT MATERIAL AND FINISH DATA (SEE CB8001)

| CODE | MATERIAL | PASSIVATE | LUBRICATION |
|------|------------|-----------|---------------|
| NONE | A-286 CRES | AMS 2700 | DRI-FILM LUBE |

RETAINING CLIP MATERIAL AND FINISH DATA (SEE CB8002)

| MATERIAL | SPEC. | PASSIVATE |
|--|-----------------|-----------|
| XM-28 (UNS S24100) STAINLESS STEEL SPRING WIRE | ASTM A313/A313M | AMS 2700 |

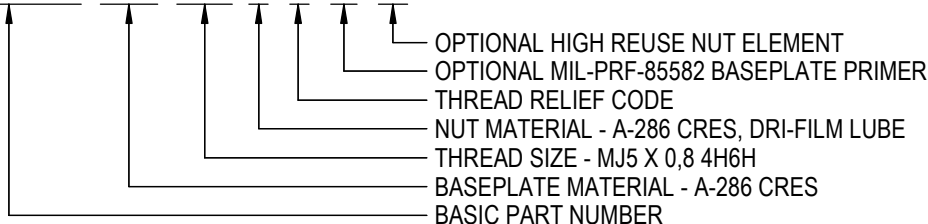
PART NUMBER SUFFIXES

| CODE | DESCRIPTION |
|------|--|
| NL | NON-LOCKING NUT ELEMENT |
| R | THREAD LOCK MEETS ISO5858 REUSE REQUIREMENTS FOR 50 REUSE CYCLES MANUFACTURER'S OPTION: COPPER PLATE PER AMS 2418 |

EXAMPLE PART NUMBER

CB8009 CR 5M

P R



UNLESS OTHERWISE SPECIFIED, ALL DIMENSIONS ARE IN MILLIMETERS AND TOLERANCES ARE AS SHOWN BELOW. DIMENSIONAL TOLERANCES AND SYMBOLS PER ANSI Y14.5M-1982.



2151 LOCKHEED WAY
CARSON CITY, NEVADA 89706

METRIC DIMENSIONS

TITLE
NUTPLATE, TWO LUG, ADHESIVE BONDED

| | | | | | | | | | |
|--------|-------|------------|---|-----------|-------|--------------|-----------------|------|----|
| ANGLES | ±1° | SIZE | A | CAGE CODE | 66530 | DWG. NO. | CB8009 (METRIC) | REV. | 13 |
| .X | ±0,8 | SCALE: 2:1 | | 26SEP22 | | SHEET 4 OF 4 | | | |
| .XX | ±0,25 | | | | | | | | |