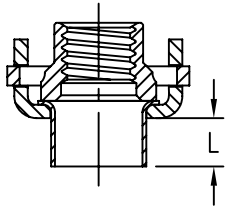
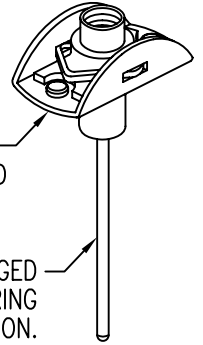


NUTPLATE ATTACHED BY ADHESIVE APPLIED TO THIS SURFACE.

DISPOSABLE STEM ENGAGED BY INSTALLATION TOOL DURING SLEEVE FLARE OPERATION.



NUTPLATE MEETS THE STRENGTH REQUIREMENTS OF NASM25027.

L SLEEVE LENGTH

THREAD AND DIMENSION DATA (ALL DIMENSIONS BEFORE PAINT)

| PART NUMBER            | THREAD T         | A MAX | B MAX | C DIA | D DIA | H MAX | R MIN |
|------------------------|------------------|-------|-------|-------|-------|-------|-------|
| CB6109( )08( )1( ) ( ) | .1640-32 UNJC-3B | .745  | .454  | .222  | .206  | .265  | .070  |
| CB6109( )3( )1( ) ( )  | .1900-32 UNJF-3B | .745  | .454  | .248  | .232  | .265  | .070  |
| CB6109( )3( )2( ) ( )  |                  |       |       |       |       | .327  | .125  |
| CB6109( )3( )3( ) ( )  |                  |       |       |       |       | .390  | .188  |
| CB6109( )3( )4( ) ( )  |                  |       |       |       |       | .453  | .250  |
| CB6109( )3( )5( ) ( )  |                  |       |       |       |       | .515  | .313  |
| CB6109( )3( )6( ) ( )  |                  |       |       |       |       | .577  | .375  |
| CB6109( )4( )1( ) ( )  | .2500-28 UNJF-3B | .948  | .554  | .310  | .294  | .310  | .070  |
| CB6109( )4( )2( ) ( )  |                  |       |       |       |       | .372  | .125  |
| CB6109( )4( )3( ) ( )  |                  |       |       |       |       | .434  | .188  |
| CB6109( )4( )4( ) ( )  |                  |       |       |       |       | .496  | .250  |
| CB6109( )4( )5( ) ( )  |                  |       |       |       |       | .558  | .313  |
| CB6109( )4( )6( ) ( )  |                  |       |       |       |       | .620  | .375  |
| CB6109( )5( )1( ) ( )  | .3125-24 UNJF-3B | 1.042 | .650  | .373  | .357  | .359  | .070  |
| CB6109( )5( )2( ) ( )  |                  |       |       |       |       | .415  | .125  |
| CB6109( )5( )3( ) ( )  |                  |       |       |       |       | .476  | .188  |
| CB6109( )5( )4( ) ( )  |                  |       |       |       |       | .539  | .250  |
| CB6109( )5( )5( ) ( )  |                  |       |       |       |       | .601  | .313  |
| CB6109( )5( )6( ) ( )  |                  |       |       |       |       | .664  | .375  |
| CB6109( )6( )1( ) ( )  | .3750-24 UNJF-3B | 1.182 | .750  | .435  | .419  | .395  | .070  |
| CB6109( )6( )2( ) ( )  |                  |       |       |       |       | .445  | .125  |

UNLESS OTHERWISE SPECIFIED, ALL DIMENSIONS ARE IN INCHES AND TOLERANCES ARE AS SHOWN BELOW. DIMENSIONAL TOLERANCES AND SYMBOLS PER ANSI Y14.5M-1982.

PROPRIETARY PARTS SHOWN IN THIS DRAWING ARE THE SUBJECT OF ISSUED UNITED STATES AND FOREIGN PATENTS AND PATENTS PENDING. UNAUTHORIZED REPRODUCTION AND/OR DISTRIBUTION OF THIS DRAWING IS SPECIFICALLY PROHIBITED.

**CLICK BOND**

CARSON CITY  
NEVADA 89706

CAD CB6109-1

APPROVALS

DATE

TITLE

NUTPLATE, TWO LUG, FLARE SLEEVE

ANGLES ±1°

DRAWN RJT 25JAN08

.XX ±.03

CHECKED *[Signature]* 25JAN08

SIZE A CAGE CODE 66530 DWG. NO. CB6109 REV. 5

.XXX ±.010

RELEASED CGH 25JAN08

.XXXX ±.001

REVISED RJT 25JAN08

SCALE 2/1 25JAN08 SHEET 1 OF 3

INSTALLATION HOLE SIZE AND REPLACEMENT COMPONENT PART NUMBERS

| THREAD SIZE CODE | U    |      | V    |      | NUT PART NO. * | CLIP PART NO. |
|------------------|------|------|------|------|----------------|---------------|
|                  | MIN  | MAX  | MIN  | MAX  |                |               |
| 08               | .224 | .229 | .304 | .314 | CB6001( )08-1  | CB6002-3      |
| 3                | .250 | .255 | .330 | .340 | CB6001( )3-( ) | CB6002-3      |
| 4                | .312 | .317 | .392 | .402 | CB6001( )4-( ) | CB6002-4      |
| 5                | .375 | .380 | .455 | .465 | CB6001( )5-( ) | CB6002-5      |
| 6                | .437 | .442 | .517 | .527 | CB6001( )6-( ) | CB6002-6      |

\* FIRST ( ) DESIGNATES NUT MATERIAL CODE.

- CR = A-286 CRES, PASSIVATE, DRI-FILM LUBE.
- CRC = A-286 CRES, CAD PLATE, DRI-FILM LUBE.
- CRS = A-286 CRES, SILVER PLATING.

SECOND ( ) DESIGNATES NUTPLATE THREAD RELIEF (NUT C'BORE) CODE.

BASEPLATE MATERIAL AND FINISH DATA

| CODE | MATERIAL   | SPEC.        | FINISH    | SPEC.            |
|------|------------|--------------|-----------|------------------|
| A    | ALUMINUM   | AMS-QQ-A-250 | NONE      |                  |
| AA   | ALUMINUM   | AMS-QQ-A-250 | ANODIZE   | MIL-A-8625, TY 1 |
| CR   | A-286 CRES | AMS 5525     | PASSIVATE | AMS 2700         |

OPTIONAL PRIMER COATING ON BASEPLATE: EPOXY PRIMER PER MIL-PRF-85582.

NUT MATERIAL AND FINISH DATA (SEE CB6001)

| CODE | MATERIAL   | FINISH          | SPEC.        | DRI-FILM LUBE |
|------|------------|-----------------|--------------|---------------|
| -    | A-286 CRES | PASSIVATE       | AMS 2700     | AS5272 TYPE 1 |
| CRC  | A-286 CRES | CADMIUM PLATING | AMS-QQ-P-416 | AS5272 TYPE 1 |
| CRS  | A-286 CRES | SILVER PLATING  | AMS 2410     | NONE          |

CLIP MATERIAL AND FINISH DATA (SEE CB6002)

| MATERIAL                         | PASSIVATE |
|----------------------------------|-----------|
| 302, 18-2 MN, OR UNS S24100 CRES | AMS 2700  |

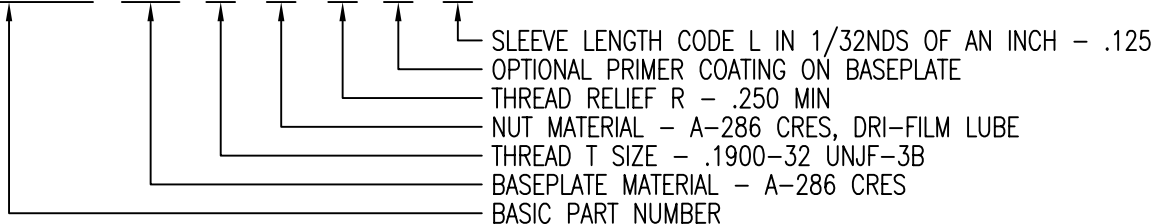
SLEEVE MATERIAL AND FINISH DATA

| MATERIAL   | SPEC.    | PASSIVATE |
|------------|----------|-----------|
| A-286 CRES | AMS 5525 | AMS 2700  |

EXAMPLE PART NUMBER

CB6109 CR 3 - 4 P 4

"NL" SUFFIX TO PART NUMBER INDICATES NON-LOCKING NUT ELEMENT.



UNLESS OTHERWISE SPECIFIED, ALL DIMENSIONS ARE IN INCHES AND TOLERANCES ARE AS SHOWN BELOW. DIMENSIONAL TOLERANCES AND SYMBOLS PER ANSI Y14.5M-1982.

PROPRIETARY PARTS SHOWN IN THIS DRAWING ARE THE SUBJECT OF ISSUED UNITED STATES AND FOREIGN PATENTS AND PATENTS PENDING. UNAUTHORIZED REPRODUCTION AND/OR DISTRIBUTION OF THIS DRAWING IS SPECIFICALLY PROHIBITED.

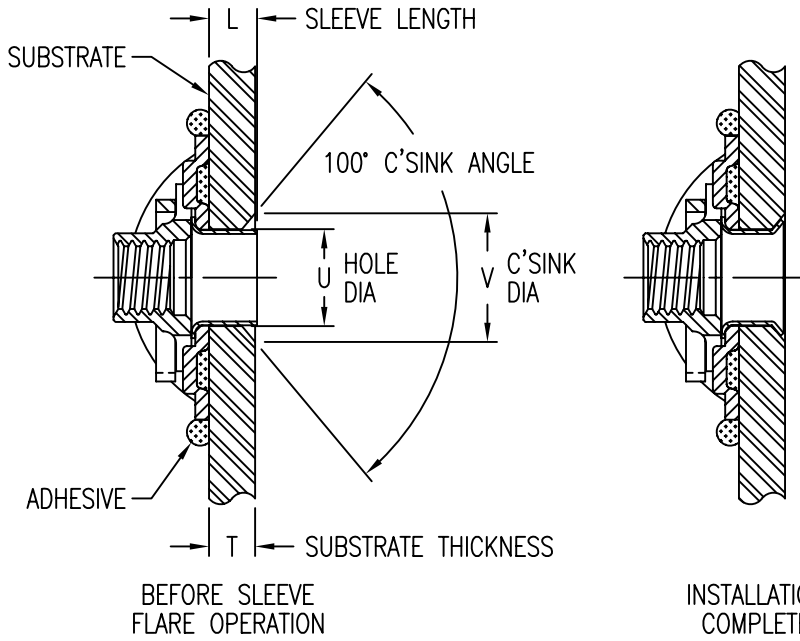


CARSON CITY NEVADA 89706

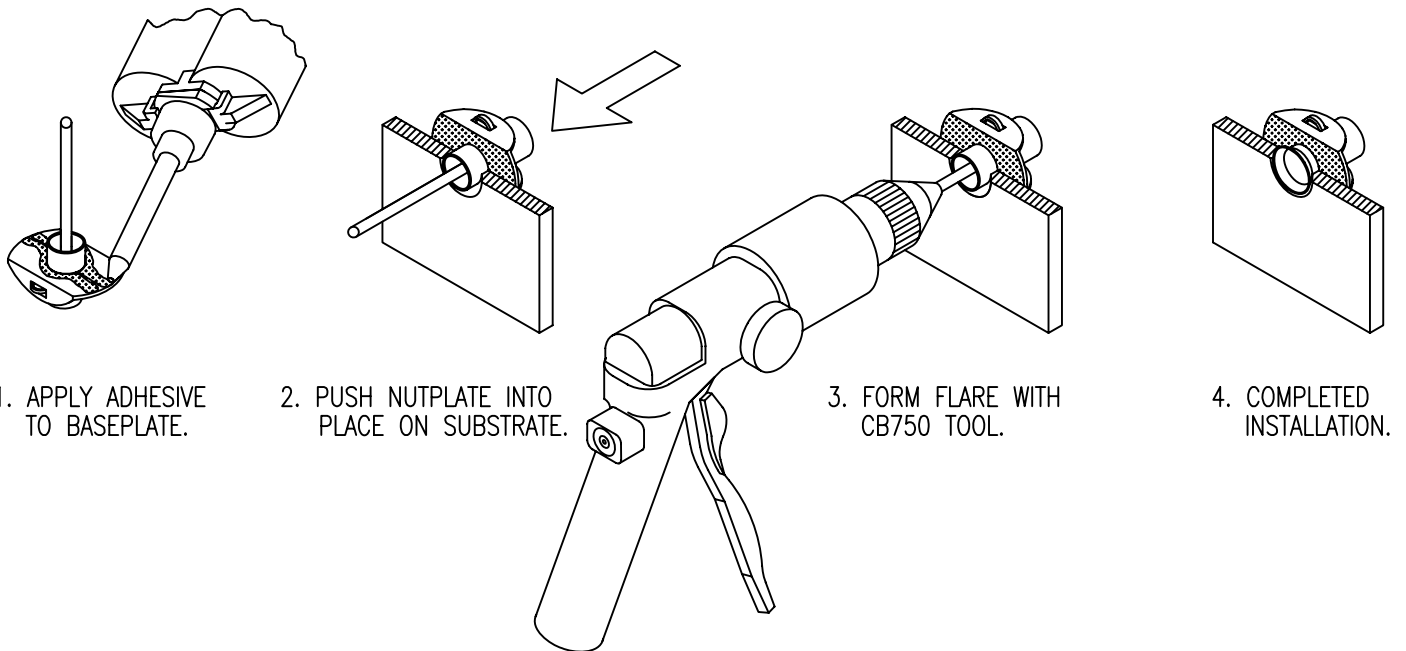
|              |       |           |                |         |                                 |           |              |
|--------------|-------|-----------|----------------|---------|---------------------------------|-----------|--------------|
| CAD CB6109-2 |       | APPROVALS |                | DATE    | TITLE                           |           |              |
| ANGLES       | ±1°   | DRAWN     | RJT            | 25JAN08 | NUTPLATE, TWO LUG, FLARE SLEEVE |           |              |
| .XX          | ±.03  | CHECKED   | <i>JAC/mtm</i> | 25JAN08 | SIZE                            | CAGE CODE | DWG. NO.     |
| .XXX         | ±.010 | RELEASED  | CGH            | 25JAN08 | A                               | 66530     | CB6109       |
| .XXXX        | ±.001 | REVISED   | RJT            | 25JAN08 | SCALE                           | 2/1       | 25JAN08      |
|              |       |           |                |         |                                 |           | SHEET 2 OF 3 |

SLEEVE LENGTH DATA

| SLEEVE LENGTH CODE | SLEEVE LENGTH L ±.010 | MATERIAL THICKNESS T |      |
|--------------------|-----------------------|----------------------|------|
|                    |                       | MIN                  | MAX  |
| 2                  | .062                  | .046                 | .077 |
| 3                  | .093                  | .078                 | .108 |
| 4                  | .125                  | .109                 | .139 |
| 5                  | .156                  | .140                 | .170 |
| 6                  | .187                  | .171                 | .202 |
| 7                  | .218                  | .203                 | .233 |
| 8                  | .250                  | .234                 | .264 |
| 9                  | .281                  | .265                 | .295 |
| 10                 | .312                  | .296                 | .327 |
| 11                 | .343                  | .328                 | .358 |
| 12                 | .375                  | .359                 | .389 |
| 13                 | .406                  | .390                 | .420 |
| 14                 | .437                  | .421                 | .452 |
| 15                 | .468                  | .453                 | .483 |
| 16                 | .500                  | .484                 | .514 |



TYPICAL INSTALLATION SEQUENCE



UNLESS OTHERWISE SPECIFIED, ALL DIMENSIONS ARE IN INCHES AND TOLERANCES ARE AS SHOWN BELOW. DIMENSIONAL TOLERANCES AND SYMBOLS PER ANSI Y14.5M-1982.

PROPRIETARY PARTS SHOWN IN THIS DRAWING ARE THE SUBJECT OF ISSUED UNITED STATES AND FOREIGN PATENTS AND PATENTS PENDING. UNAUTHORIZED REPRODUCTION AND/OR DISTRIBUTION OF THIS DRAWING IS SPECIFICALLY PROHIBITED.

**CLICK BOND**

CARSON CITY  
NEVADA 89706

CAD CB6109-3

APPROVALS DATE

TITLE

ANGLES ±1°

DRAWN RJT 25JAN08

NUTPLATE, TWO LUG, FLARE SLEEVE

.XX ±.03

CHECKED *DOC/mtm* 25JAN08

SIZE A CAGE CODE 66530 DWG. NO. CB6109 REV. 5

.XXX ±.010

RELEASED *CGH* 25JAN08

SCALE 2/1 25JAN08 SHEET 3 OF 3

.XXXX ±.001

REVISED RJT 25JAN08