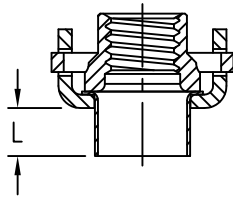


NUTPLATE ATTACHED BY ADHESIVE APPLIED TO THIS SURFACE.

DISPOSABLE FIXTURE RING

DISPOSABLE ELASTIC FIXTURE HOLDS NUTPLATE WHILE ADHESIVE CURES.



NUTPLATE MEETS THE STRENGTH REQUIREMENTS OF NASM25027.

THREAD, DIMENSION, AND APPROX. WEIGHT DATA (ALL DIMENSIONS BEFORE PAINT)

PART NUMBER	THREAD SIZE	A MAX	B MAX	C DIA	D DIA	H MAX	R MIN	BASIC WEIGHT *		SLEEVE CONST.
								(CR)	(A & AA)	
CB6209()08()1() ()	.1640-32 UNJC-3B	.745	.454	.216	.196	.265	.070	.56	.35	.00578
CB6209()3()1() ()								.59	.38	
CB6209()3()2() ()								.64	.43	
CB6209()3()3() ()								.69	.48	
CB6209()3()4() ()								.76	.55	
CB6209()3()5() ()								.80	.59	
CB6209()3()6() ()	.1900-32 UNJF-3B	.745	.454	.248	.232	.310	.070	.85	.64	.00530
CB6209()3()5() ()								.80	.59	
CB6209()3()6() ()								.85	.64	
CB6209()4()1() ()								.80	.59	
CB6209()4()2() ()								.85	.64	
CB6209()4()3() ()								.90	.69	
CB6209()4()4() ()	.2500-28 UNJF-3B	.948	.554	.310	.294	.434	.188	1.15	.80	.00674
CB6209()4()3() ()								1.15	.80	
CB6209()4()4() ()								1.24	.89	
CB6209()4()5() ()								1.33	.98	
CB6209()4()6() ()								1.43	1.07	
CB6209()5()1() ()								1.55	1.05	
CB6209()5()2() ()	.3125-24 UNJF-3B	1.042	.650	.373	.357	.415	.125	1.61	1.11	.00813
CB6209()5()2() ()								1.61	1.11	
CB6209()5()3() ()								1.72	1.22	
CB6209()5()4() ()								1.84	1.34	
CB6209()5()5() ()								1.95	1.45	
CB6209()5()6() ()								2.06	1.56	
CB6209()6()1() ()	.3750-24 UNJF-3B	1.182	.750	.435	.419	.395	.070	2.44	1.59	.00952
CB6209()6()2() ()								2.56	1.71	

* BASIC APPROX. WEIGHT IN LB/100 WITHOUT INSTALLATION FIXTURE (BASEPLATE MATERIAL CODE IN PARENTHESIS). TO CALCULATE THE TOTAL APPROX. WEIGHT MULTIPLY THE SLEEVE CONSTANT BY THE SLEEVE LENGTH CODE AND ADD THE BASIC WEIGHT. EXAMPLE: FOR THE CB6209CR3-1P4 NUTPLATE, 4(.00530) + .59 = .6112 LB/100

UNLESS OTHERWISE SPECIFIED, ALL DIMENSIONS ARE IN INCHES AND TOLERANCES ARE AS SHOWN BELOW. DIMENSIONAL TOLERANCES AND SYMBOLS PER ANSI Y14.5M-1982.

PROPRIETARY PARTS SHOWN IN THIS DRAWING ARE THE SUBJECT OF ISSUED UNITED STATES AND FOREIGN PATENTS AND PATENTS PENDING. UNAUTHORIZED REPRODUCTION AND/OR DISTRIBUTION OF THIS DRAWING IS SPECIFICALLY PROHIBITED.



CARSON CITY NEVADA 89706

CAD CB6209-1

APPROVALS DATE

TITLE

ANGLES ±1°

DRAWN *DAC* 4DEC12

NUTPLATE, TWO LUG, STRAIGHT SLEEVE

.XX ±.03

CHECKED *DAC* 4DEC12

SIZE A CAGE CODE 66530 DWG. NO. CB6209 REV. 7

.XXX ±.010

RELEASED *DAC* 4DEC12

.XXXX ±.001

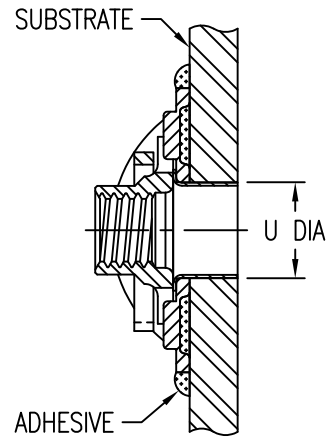
REVISED *DAC* 4DEC12

SCALE 2/1 4DEC12 SHEET 1 OF 4

INSTALLATION HOLE SIZE AND REPLACEMENT COMPONENTS

SIZE	U DIA	NUT PART NO. *	CLIP PART NO.
08	.218-.223	CB6001()08-1	CB6002-08
3	.250-.255	CB6001()3-()	CB6002-3
4	.312-.317	CB6001()4-()	CB6002-4
5	.375-.380	CB6001()5-()	CB6002-5
6	.437-.442	CB6001()6-()	CB6002-6

* FIRST () DESIGNATES NUT MATERIAL CODE (SEE CB6001)
 SECOND () DESIGNATES NUT C'BORE CODE
 "NL" SUFFIX INDICATES NON-LOCKING NUT ELEMENT



SLEEVE LENGTH	
CODE	L
1	.031
2	.062
3	.093
4	.125
5	.156
6	.187
7	.218
8	.250
9	.281
10	.312
11	.343
12	.375
13	.406
14	.437
15	.468
16	.500
17	.531
18	.562
19	.593
20	.625
21	.656
22	.687
23	.718
24	.750
25	.781
26	.812
27	.843
28	.875
29	.906
30	.937
31	.968
32	1.000

BASEPLATE MATERIAL AND FINISH DATA

CODE	MATERIAL	SPEC.	FINISH	SPEC.
A	ALUMINUM	AMS-QQ-A-250	NONE	
AA	ALUMINUM	AMS-QQ-A-250	ANODIZE	MIL-A-8625 TYPE 1
CR	A-286 CRES	AMS 5525	PASSIVATE	AMS 2700

NUT MATERIAL AND FINISH DATA (SEE CB6001)

CODE	MATERIAL	FINISH	SPEC.	DRI-FILM LUBE
-	A-286 CRES	PASSIVATE	AMS 2700	AS5272
CRC	A-286 CRES	CADMIUM PLATE	AMS-QQ-P-416	AS5272
CRS	A-286 CRES	SILVER PLATE	AMS 2410	NONE

RETAINING CLIP MATERIAL AND FINISH DATA (SEE CB6002)

MATERIAL	FINISH
XM-28 (UNS S24100) STAINLESS STEEL SPRING WIRE	PASSIVATE AMS 2700

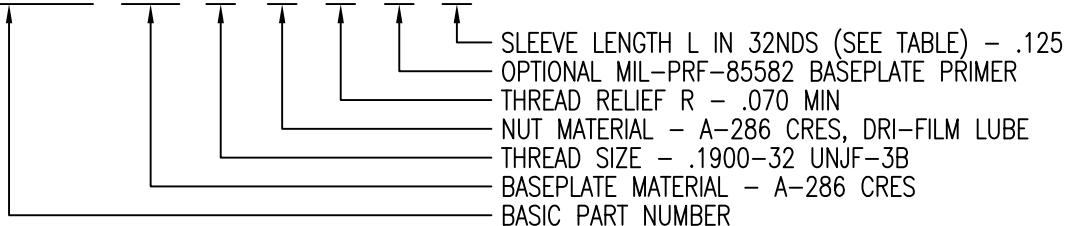
SLEEVE MATERIAL AND FINISH DATA

MATERIAL	FINISH
A-286 CRES	PASSIVATE AMS 2700

NOTES: 1. "NL" SUFFIX TO PART NUMBER INDICATES NON-LOCKING NUT ELEMENT
 2. SLEEVE LENGTH L IN 32NDS (1 OR 2 DIGITS, SEE TABLE) OR
 SLEEVE LENGTH L IN THOUSANDTHS OF AN INCH (3 DIGITS)

EXAMPLE PART NUMBER

CB6209 CR 3 - 1 P 4



UNLESS OTHERWISE SPECIFIED, ALL DIMENSIONS ARE IN INCHES AND TOLERANCES ARE AS SHOWN BELOW. DIMENSIONAL TOLERANCES AND SYMBOLS PER ANSI Y14.5M-1982.

PROPRIETARY PARTS SHOWN IN THIS DRAWING ARE THE SUBJECT OF ISSUED UNITED STATES AND FOREIGN PATENTS AND PATENTS PENDING. UNAUTHORIZED REPRODUCTION AND/OR DISTRIBUTION OF THIS DRAWING IS SPECIFICALLY PROHIBITED.



CARSON CITY
NEVADA 89706

CAD CB6209-2

APPROVALS DATE

TITLE

ANGLES ±1°

DRAWN DAC 4DEC12

NUTPLATE, TWO LUG, STRAIGHT SLEEVE

.XX ±.03

CHECKED DAC/mtm 4DEC12

SIZE A CAGE CODE 66530 DWG. NO. CB6209 REV. 7

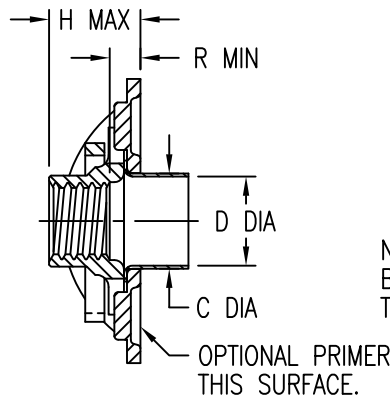
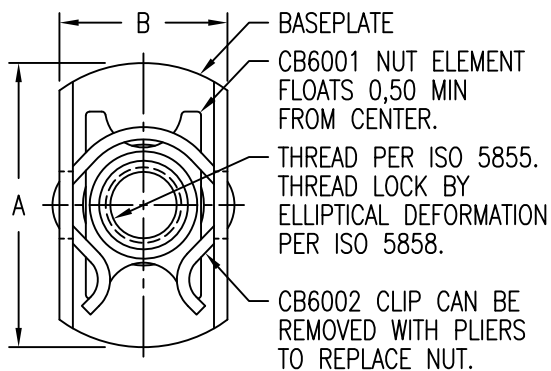
.XXX ±.010

RELEASED DAC/mtm 4DEC12

SCALE 2/1 4DEC12 SHEET 2 OF 4

.XXXX ±.001

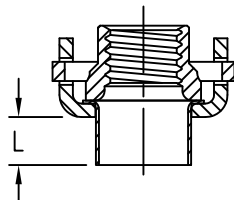
REVISED DAC 4DEC12



NUTPLATE ATTACHED BY ADHESIVE APPLIED TO THIS SURFACE.

DISPOSABLE FIXTURE RING

DISPOSABLE ELASTIC FIXTURE HOLDS NUTPLATE WHILE ADHESIVE CURES.



NUTPLATE MEETS THE STRENGTH REQUIREMENTS OF ISO 5858 (900 MPa).

THREAD, DIMENSION, AND APPROX. WEIGHT DATA (ALL DIMENSIONS BEFORE PAINT)

PART NUMBER	THREAD SIZE	A MAX	B MAX	C DIA	D DIA	H MAX	R MIN	BASIC WEIGHT *		SLEEVE CONST.
								(CR)	(A & AA)	
CB6209()4M()1() ()	MJ4 X 0,7 4H6H	19,0	11,6	5,49	4,98	5,6	1,6	2,6	1,7	0,0168
CB6209()5M()1() ()	MJ5 X 0,8 4H6H	19,0	11,6	6,30	5,89	6,6	1,6	2,8	1,8	0,0154
CB6209()5M()4() ()						8,4	4,0	3,1	2,1	
CB6209()5M()6() ()						10,4	6,0	3,4	2,4	
CB6209()5M()8() ()						12,4	8,0	3,7	2,7	
CB6209()5M()10() ()						14,4	10,0	4,0	3,0	
CB6209()5M()12() ()	16,4	12,0	4,3	3,3						
CB6209()6M()1() ()	MJ6 X 1,0 4H5H	24,1	14,1	7,87	7,47	7,5	1,6	4,7	3,1	0,0196
CB6209()6M()4() ()						9,4	4,0	5,2	3,6	
CB6209()6M()6() ()						11,4	6,0	5,7	4,1	
CB6209()6M()8() ()						13,4	8,0	6,2	4,6	
CB6209()6M()10() ()						15,4	10,0	6,7	5,1	
CB6209()6M()12() ()	17,4	12,0	7,2	5,6						
CB6209()8M()1() ()	MJ8 X 1,0 4H5H	26,5	16,6	9,47	9,07	8,6	1,6	7,0	4,7	0,0236
CB6209()8M()4() ()						11,4	4,0	7,6	5,3	
CB6209()8M()6() ()						13,4	6,0	8,3	6,0	
CB6209()8M()8() ()						15,4	8,0	8,9	6,6	
CB6209()8M()10() ()						17,4	10,0	9,5	7,2	
CB6209()8M()12() ()	19,4	12,0	10,2	7,9						
CB6209()10M()1() ()	MJ10 X 1,25 4H5H	30,1	19,1	11,05	10,64	10,3	1,6	11,9	8,2	0,0277

* BASIC APPROX. WEIGHT IN GRAMS WITHOUT INSTALLATION FIXTURE (BASEPLATE MATERIAL CODE IN PARENTHESIS). TO CALCULATE THE TOTAL APPROX. WEIGHT MULTIPLY THE SLEEVE CONSTANT BY THE SLEEVE LENGTH CODE DIVIDED BY 5 AND ADD THE BASIC WEIGHT.

EXAMPLE: FOR THE CB6209CR5M1P030 NUTPLATE, (030/5)(0,0154) + 2,8 = 2,8924 GRAMS

UNLESS OTHERWISE SPECIFIED, ALL DIMENSIONS ARE IN MILLIMETERS AND TOLERANCES ARE AS SHOWN BELOW. DIMENSIONAL TOLERANCES AND SYMBOLS PER ANSI Y14.5M-1982.

PROPRIETARY PARTS SHOWN IN THIS DRAWING ARE THE SUBJECT OF ISSUED UNITED STATES AND FOREIGN PATENTS AND PATENTS PENDING. UNAUTHORIZED REPRODUCTION AND/OR DISTRIBUTION OF THIS DRAWING IS SPECIFICALLY PROHIBITED.

CLICK BOND

CARSON CITY
NEVADA 89706

CAD CB6209-3 METRIC DIMENSIONS	
ANGLES	±1°
.X	±0,8
.XX	±0,25

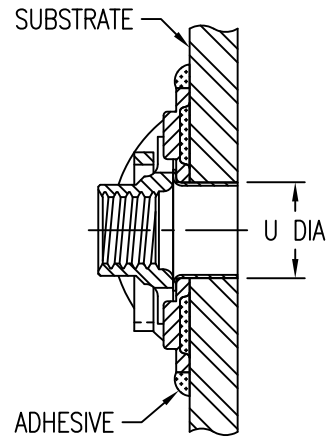
APPROVALS	DATE
DRAWN <i>DAC</i>	4DEC12
CHECKED <i>DAC/mtm</i>	4DEC12
RELEASED <i>ABC/mtm</i>	4DEC12
REVISED <i>DAC</i>	4DEC12

TITLE NUTPLATE, TWO LUG, STRAIGHT SLEEVE			
SIZE A	CAGE CODE 66530	DWG. NO. CB6209 (METRIC)	REV. 7
SCALE 2/1	4DEC12	SHEET 3 OF 4	

INSTALLATION HOLE SIZE AND REPLACEMENT COMPONENTS

SIZE	U DIA	NUT PART NO. *	CLIP PART NO.
4M	5,54-5,66	CB6001()4M1	CB6002-4M
5M	6,35-6,48	CB6001()5M()	CB6002-5M
6M	7,92-8,05	CB6001()6M()	CB6002-6M
8M	9,53-9,65	CB6001()8M()	CB6002-8M
10M	11,10-11,23	CB6001()10M1	CB6002-10M

* FIRST () DESIGNATES NUT MATERIAL CODE (SEE CB6001)
 SECOND () DESIGNATES NUT C'BORE CODE
 "NL" SUFFIX INDICATES NON-LOCKING NUT ELEMENT



SLEEVE LENGTH

CODE	L
005	0,50
010	1,00
015	1,50
020	2,00
025	2,50
030	3,00
035	3,50
040	4,00
045	4,50
050	5,00
055	5,50
060	6,00
065	6,50
070	7,00
075	7,50
080	8,00
085	8,50
090	9,00
095	9,50
100	10,00
105	10,50
110	11,00
115	11,50
120	12,00
125	12,50
130	13,00
135	13,50
140	14,00
145	14,50
150	15,00

BASEPLATE MATERIAL AND FINISH DATA

CODE	MATERIAL	SPEC.	FINISH	SPEC.
A	ALUMINUM	AMS-QQ-A-250	NONE	
AA	ALUMINUM	AMS-QQ-A-250	ANODIZE	MIL-A-8625 TYPE 1
CR	A-286 CRES	AMS 5525	PASSIVATE	AMS 2700

NUT MATERIAL AND FINISH DATA (SEE CB6001)

CODE	MATERIAL	FINISH	SPEC.	DRI-FILM LUBE
NONE	A-286 CRES	PASSIVATE	AMS 2700	AS5272
CRC	A-286 CRES	CADMIUM PLATE	AMS-QQ-P-416	AS5272
CRS	A-286 CRES	SILVER PLATE	AMS 2410	NONE

RETAINING CLIP MATERIAL AND FINISH DATA (SEE CB6002)

MATERIAL	FINISH
XM-28 (UNS S24100) STAINLESS STEEL SPRING WIRE	PASSIVATE AMS 2700

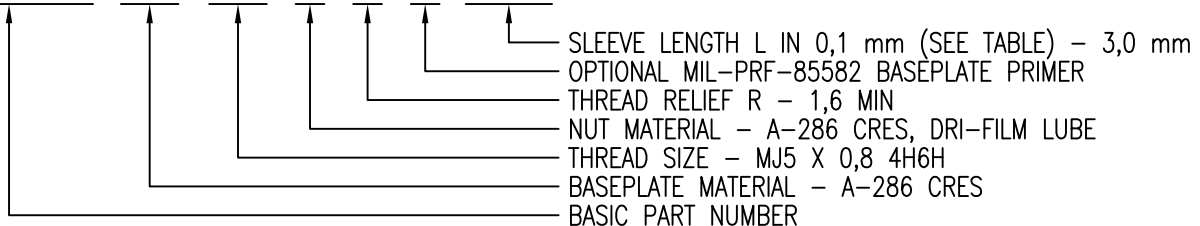
SLEEVE MATERIAL AND FINISH DATA

MATERIAL	FINISH
A-286 CRES	PASSIVATE AMS 2700

NOTES: 1. "NL" SUFFIX TO PART NUMBER INDICATES NON-LOCKING NUT ELEMENT
 2. SLEEVE LENGTH L IN 0,1 mm (3 DIGITS, SEE TABLE)
 OR SLEEVE LENGTH L IN 0,1 mm (1 OR 2 DIGITS)

EXAMPLE PART NUMBER

CB6209 CR 5M 1 P 030



UNLESS OTHERWISE SPECIFIED, ALL DIMENSIONS ARE IN MILLIMETERS AND TOLERANCES ARE AS SHOWN BELOW. DIMENSIONAL TOLERANCES AND SYMBOLS PER ANSI Y14.5M-1982.

PROPRIETARY PARTS SHOWN IN THIS DRAWING ARE THE SUBJECT OF ISSUED UNITED STATES AND FOREIGN PATENTS AND PATENTS PENDING. UNAUTHORIZED REPRODUCTION AND/OR DISTRIBUTION OF THIS DRAWING IS SPECIFICALLY PROHIBITED.



CARSON CITY
NEVADA 89706

CAD CB6209-4 METRIC DIMENSIONS	
ANGLES	±1°
.X	±0,8
.XX	±0,25

APPROVALS	DATE
DRAWN <i>DAC</i>	4DEC12
CHECKED <i>DAC/mtm</i>	4DEC12
RELEASED <i>ABC/mtm</i>	4DEC12
REVISED <i>DAC</i>	4DEC12

TITLE NUTPLATE, TWO LUG, STRAIGHT SLEEVE			
SIZE A	CAGE CODE 66530	DWG. NO. CB6209 (METRIC)	REV. 7
SCALE 2/1	4DEC12	SHEET 4 OF 4	