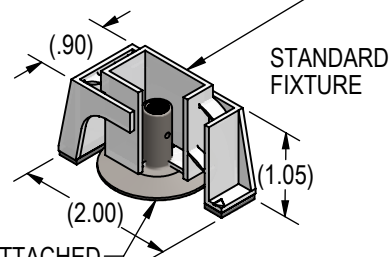
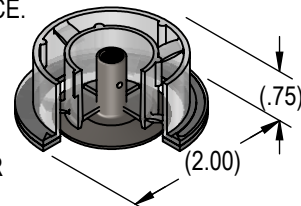


DISPOSABLE PRESSURE SENSITIVE ADHESIVE FIXTURE HOLDS STANDOFF WHILE ADHESIVE CURES.



STANDOFF ATTACHED BY ADHESIVE APPLIED TO THIS SURFACE.

FOR OPTIONAL ROUND FIXTURE ADD SUFFIX R TO PART NUMBER



OPTIONAL Ø.062-.070 INSPECTION HOLE LOCATED 2 THREAD PITCHES BELOW INSERT ON .8 AND LONGER PARTS, PART NUMBER SUFFIX H

STANDOFF STRAIGHT WITHIN .004 INCH PER INCH OF LENGTH.
PITCH DIA CONCENTRIC WITH BASE O.D. WITHIN .020 FIM.
PITCH DIA PERPENDICULAR TO BASE WITHIN ±1°.

LENGTH L DATA (LENGTH CODE IN SIXTEENTHS OF AN INCH) /1/

CODE	6	7	8	9	10	11	12	13	14	15	16	17	18	20	22	24
L	.375	.437	.500	.562	.625	.687	.750	.812	.875	.937	1.000	1.062	1.125	1.250	1.375	1.500
D MIN	.295		.400		.472											

STANDOFF MATERIAL AND FINISH DATA

CODE	MATERIAL	SPEC.	FINISH	SPEC.
A	2024 OR 6061 ALUMINUM	AMS-QQ-A-200, AMS-QQ-A-225, AMS-QQ-A-250	NONE	
AA	ALUMINUM		ANODIZE	MIL-PRF-8625
CR	302, 303, 304 OR A-286 CRES	AMS 5513, 5516, 5636, 5637, 5638, 5639, 5640, 5641, 5647 AMS 5525, 5726, 5731, 5732, 5734, 5737 (CHEMISTRY ONLY)	PASSIVATE	AMS 2700
CRA	A-286 CRES	AMS 5525, 5726, 5731, 5732, 5734, 5737 (CHEMISTRY ONLY)	PASSIVATE	AMS 2700
T	6AL-4V TITANIUM	AMS 4911, 4928, 4965, 4967	NONE	

THREAD DATA

CODE	THREAD SIZE
06	.1380-32 UNC-3B
08	.1640-32 UNC-3B
3	.1900-32 UNF-3B

OPTIONAL BASEPLATE PRIMER

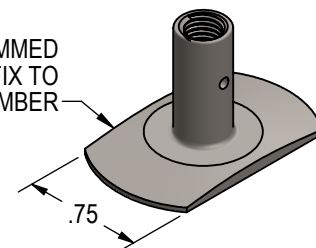
CODE	MATERIAL SPEC.
C	CYTEC BR127 PRIMER
P	MIL-PRF-85582 EPOXY PRIMER
W	CBPS-211 FILM PRIMER

MS21209 OR NAS1130 INSERT INSTALLED PER MS33537.
DRI-FILM LUBE ON INSERT PER AS5272.

THREAD LOCK PER NASM25027.
STANDOFF ACCOMMODATES AS8879 UNJ THREAD SCREW.

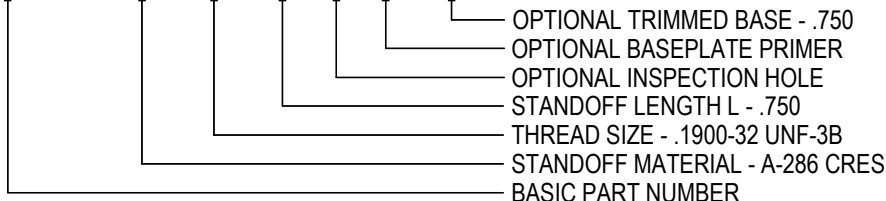
NOTE: /1/ FOR INTERMEDIATE AND LONGER LENGTHS D MIN = .472

FOR OPTIONAL TRIMMED BASE ADD 750 SUFFIX TO PART NUMBER



EXAMPLE PART NUMBER

CB3001 CRA 3 - 12 H P 750



UNLESS OTHERWISE SPECIFIED, ALL DIMENSIONS ARE IN INCHES AND TOLERANCES ARE AS SHOWN BELOW. DIMENSIONAL TOLERANCES AND SYMBOLS PER ANSI Y14.5M-1982.

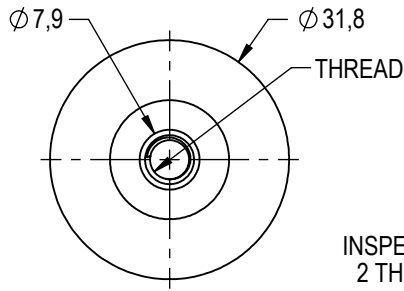
THE PARTS SHOWN IN THIS DRAWING ARE PROPRIETARY AND MAY BE THE SUBJECT OF ISSUED UNITED STATES AND FOREIGN PATENTS AND PATENTS PENDING. UNAUTHORIZED REPRODUCTION AND/OR DISTRIBUTION OF THIS DRAWING IS SPECIFICALLY PROHIBITED.



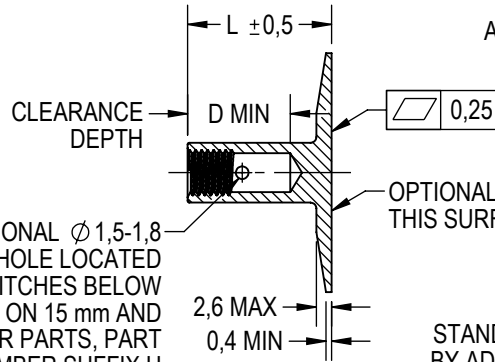
2151 LOCKHEED WAY
CARSON CITY, NEVADA 89706

		APPROVALS	DATE
ANGLES	±1°	DRAWN GTP	28NOV23
.XX	±.03	CHECKED <i>DOC</i>	28NOV23
.XXX	±.010	RELEASED <i>RDA</i>	29NOV23
.XXXX	±.001	REVISED GTP	28NOV23

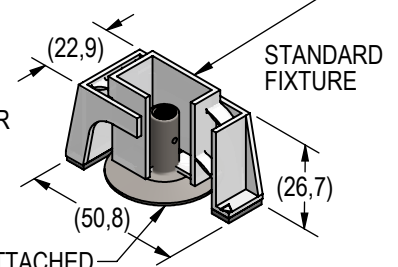
TITLE			
STANDOFF, LOCKING THREAD, ADHESIVE BONDED			
SIZE	CAGE CODE	DWG. NO.	REV.
A	66530	CB3001	18
SCALE: 1:1		28NOV23	SHEET 1 OF 2



OPTIONAL $\phi 1,5-1,8$
 INSPECTION HOLE LOCATED
 2 THREAD PITCHES BELOW
 INSERT ON 15 mm AND
 LONGER PARTS, PART
 NUMBER SUFFIX H

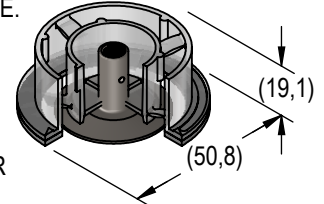


DISPOSABLE PRESSURE SENSITIVE
 ADHESIVE FIXTURE HOLDS STANDOFF
 WHILE ADHESIVE CURES.



STANDOFF ATTACHED
 BY ADHESIVE APPLIED
 TO THIS SURFACE.

FOR OPTIONAL
 ROUND FIXTURE
 ADD SUFFIX R
 TO PART NUMBER



STANDOFF STRAIGHT WITHIN 0,004 mm PER mm OF LENGTH.
 PITCH DIA CONCENTRIC WITH BASE O.D. WITHIN 0,5 FIM.
 PITCH DIA PERPENDICULAR TO BASE WITHIN $\pm 1^\circ$.

LENGTH L DATA (LENGTH CODE IN MILLIMETERS) /1/

CODE	10M	12M	15M	20M	25M	30M	35M
L	10	12	15	20	25	30	35
D MIN	7,5		12,3				

STANDOFF MATERIAL AND FINISH DATA

CODE	MATERIAL	SPEC.	FINISH	SPEC.
A	2024 OR 6061	AMS-QQ-A-200, AMS-QQ-A-225, AMS-QQ-A-250	NONE	
AA	ALUMINUM		ANODIZE	MIL-PRF-8625
CR	302, 303, 304 OR A-286 CRES	AMS 5513, 5516, 5636, 5637, 5638, 5639, 5640, 5641, 5647 AMS 5525, 5726, 5731, 5732, 5734, 5737 (CHEMISTRY ONLY)	PASSIVATE	AMS 2700
CRA	A-286 CRES	AMS 5525, 5726, 5731, 5732, 5734, 5737 (CHEMISTRY ONLY)	PASSIVATE	AMS 2700
T	6AL-4V TITANIUM	AMS 4911, 4928, 4965, 4967	NONE	

THREAD DATA

CODE	THREAD SIZE
3M	M3 X 0,5 4H5H
4M	M4 X 0,7 4H5H
5M	M5 X 0,8 4H5H

OPTIONAL BASEPLATE PRIMER

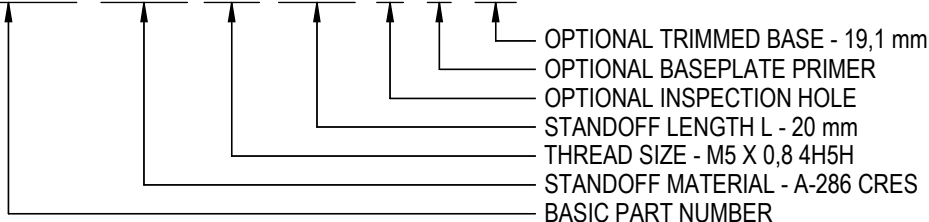
CODE	MATERIAL SPEC.
C	CYTEC BR127 PRIMER
P	MIL-PRF-85582 EPOXY PRIMER
W	CBPS-211 FILM PRIMER

MA3330 OR EQUIVALENT INSERT.
 INSERT INSTALLED PER MA1567.
 DRI-FILM LUBE PER AS5272.
 THREAD LOCK PER ISO 2320.
 STANDOFF ACCOMMODATES ISO 5855 MJ THREAD SCREW.

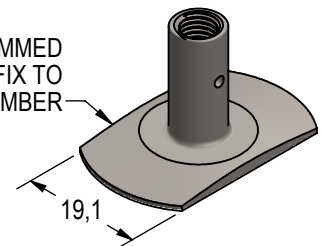
NOTE: /1/ FOR INTERMEDIATE AND LONGER LENGTHS D MIN = 7,5 (L<15) AND D MIN = 12,3 (L ≥ 15)

EXAMPLE PART NUMBER

CB3001 CRA 5M 20M H P 19



FOR OPTIONAL TRIMMED
 BASE ADD 19 SUFFIX TO
 PART NUMBER



UNLESS OTHERWISE SPECIFIED, ALL
 DIMENSIONS ARE IN MILLIMETERS AND
 TOLERANCES ARE AS SHOWN BELOW.
 DIMENSIONAL TOLERANCES AND SYMBOLS
 PER ANSI Y14.5M-1982.

THE PARTS SHOWN IN THIS DRAWING ARE PROPRIETARY
 AND MAY BE THE SUBJECT OF ISSUED UNITED STATES
 AND FOREIGN PATENTS AND PATENTS PENDING.
 UNAUTHORIZED REPRODUCTION AND/OR DISTRIBUTION
 OF THIS DRAWING IS SPECIFICALLY PROHIBITED.



2151 LOCKHEED WAY
 CARSON CITY, NEVADA 89706

TITLE
 STANDOFF, LOCKING THREAD, ADHESIVE BONDED

METRIC DIMENSIONS

ANGLES	$\pm 1^\circ$
.X	$\pm 0,8$
.XX	$\pm 0,25$

APPROVALS		DATE
DRAWN	GTP	28NOV23
CHECKED	<i>DOC</i>	28NOV23
RELEASED	<i>RDA</i>	29NOV23
REVISED	GTP	28NOV23

SIZE	A
CAGE CODE	66530
SCALE: 1:1	

DWG. NO.	CB3001 (METRIC)
REV.	18
DATE	28NOV23