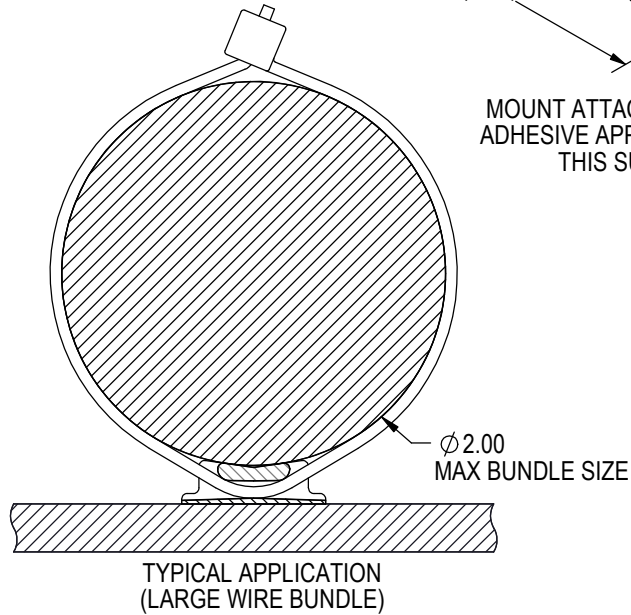
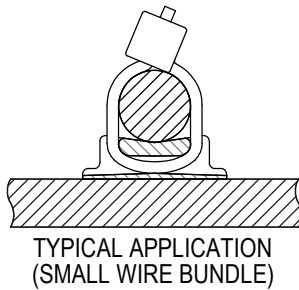


MOUNT ATTACHED BY ADHESIVE APPLIED TO THIS SURFACE.

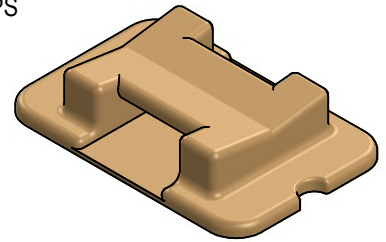


MATERIAL, FINISH, AND APPROX. WEIGHT DATA

CODE	MATERIAL	FINISH	APPROX. WEIGHT
V	40% GLASS REINFORCED POLYETHERIMIDE (ULTEM 2400 OR EQUIVALENT)	ABRASIVE CLEAN	.46 LB/100
VC	20% CARBON REINFORCED POLYETHERIMIDE (RTP 2199 X 126083)	ABRASIVE CLEAN	.39 LB/100

NOTES:

- FOR USE WITH INTERMEDIATE, STANDARD, LIGHT HEAVY, AND HEAVY CABLE TIE STRAPS
- APPROX. WEIGHT EXCLUDES THE WEIGHT OF THE DISPOSABLE INSTALLATION FIXTURE



EXAMPLE PART NUMBER

CB9120 V 5

↑ REFERENCE SIZE
 ↑ MATERIAL - GLASS/POLYETHERIMIDE
 ↑ BASIC PART NUMBER

UNLESS OTHERWISE SPECIFIED, ALL DIMENSIONS ARE IN INCHES AND TOLERANCES ARE AS SHOWN BELOW. DIMENSIONAL TOLERANCES AND SYMBOLS PER ANSI Y14.5M-1982.

THE PARTS SHOWN IN THIS DRAWING ARE PROPRIETARY AND MAY BE THE SUBJECT OF ISSUED UNITED STATES AND FOREIGN PATENTS AND PATENTS PENDING. UNAUTHORIZED REPRODUCTION AND/OR DISTRIBUTION OF THIS DRAWING IS SPECIFICALLY PROHIBITED.

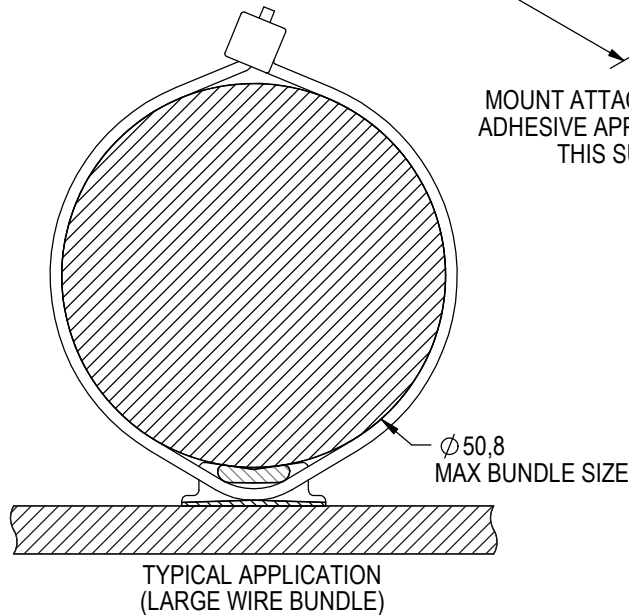
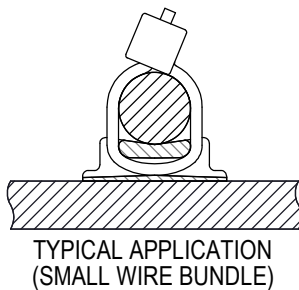
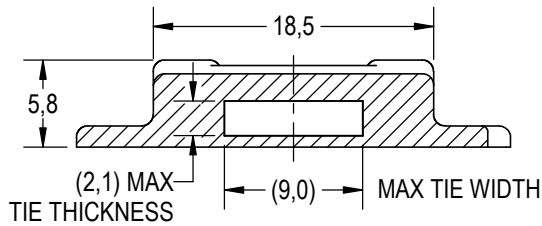
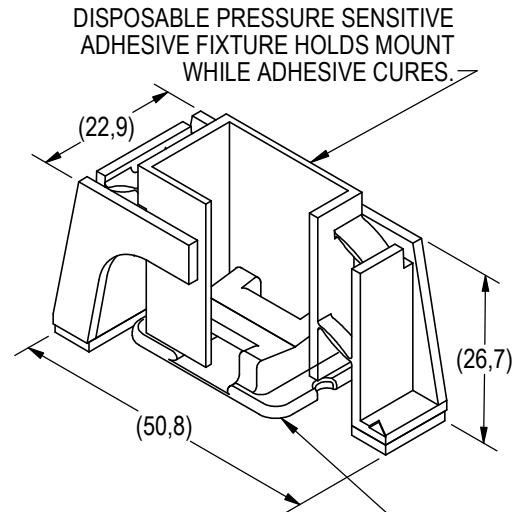
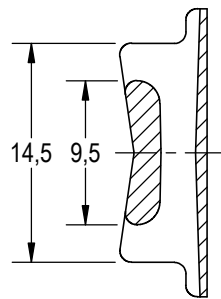
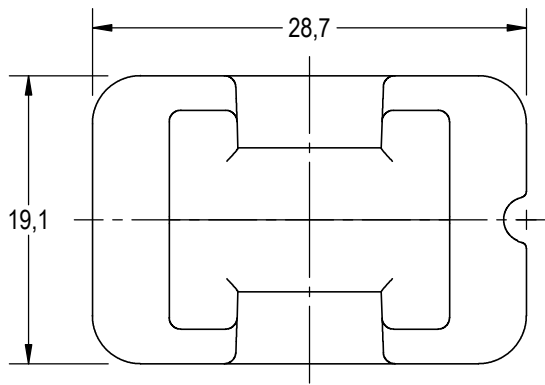


2151 LOCKHEED WAY
 CARSON CITY, NEVADA 89706

		APPROVALS	DATE
ANGLES	±1°	DRAWN GTP	7SEP21
.XX	±.03	CHECKED <i>DAC/ctm</i>	7SEP21
.XXX	±.010	RELEASED SKL	7SEP21
.XXXX	±.001	REVISED GTP	7SEP21

TITLE
MOUNT, CABLE TIE ANCHOR

SIZE	CAGE CODE	DWG. NO.	REV.
A	66530	CB9120	7
SCALE: 2:1		7SEP21	SHEET 1 OF 2



DISPOSABLE PRESSURE SENSITIVE
ADHESIVE FIXTURE HOLDS MOUNT
WHILE ADHESIVE CURES.

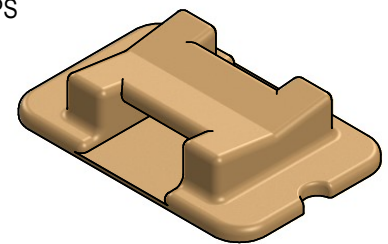
MOUNT ATTACHED BY
ADHESIVE APPLIED TO
THIS SURFACE.

MATERIAL, FINISH, AND APPROX. WEIGHT DATA

CODE	MATERIAL	FINISH	APPROX. WEIGHT
V	40% GLASS REINFORCED POLYETHERIMIDE (ULTEM 2400 OR EQUIVALENT)	ABRASIVE CLEAN	2,1 GRAMS
VC	20% CARBON REINFORCED POLYETHERIMIDE (RTP 2199 X 126083)	ABRASIVE CLEAN	1,8 GRAMS

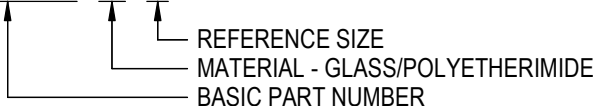
NOTES:

- FOR USE WITH INTERMEDIATE, STANDARD, LIGHT HEAVY, AND HEAVY CABLE TIE STRAPS
- APPROX. WEIGHT EXCLUDES THE WEIGHT OF THE DISPOSABLE INSTALLATION FIXTURE



EXAMPLE PART NUMBER

CB9120 V 5



UNLESS OTHERWISE SPECIFIED, ALL
DIMENSIONS ARE IN MILLIMETERS AND
TOLERANCES ARE AS SHOWN BELOW.
DIMENSIONAL TOLERANCES AND SYMBOLS
PER ANSI Y14.5M-1982.



2151 LOCKHEED WAY
CARSON CITY, NEVADA 89706

METRIC DIMENSIONS

TITLE
MOUNT, CABLE TIE ANCHOR

ANGLES	±1°
.X	±0,8
.XX	±0,25

SIZE	CAGE CODE
A	66530
SCALE: 2:1	

DWG. NO.	REV.
CB9120 (METRIC)	7
7SEP21	SHEET 2 OF 2