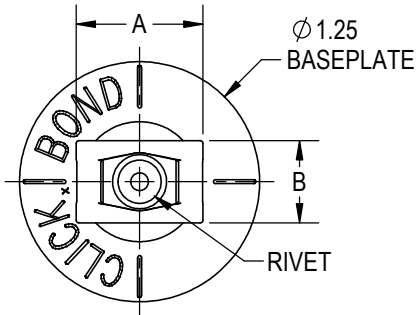
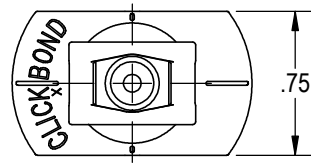


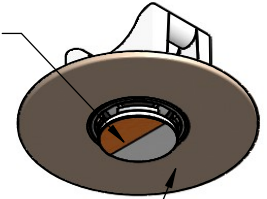
STANDARD BASE PART



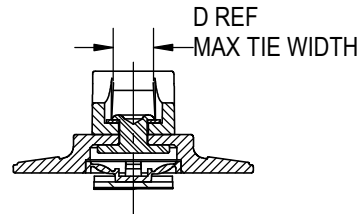
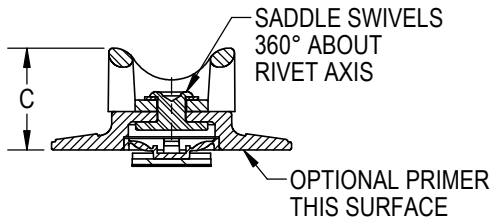
OPTIONAL TRIMMED BASE
750 SUFFIX



PRESSURE SENSITIVE
ADHESIVE FIXTURE
HOLDS MOUNT WHILE
ADHESIVE CURES.



MOUNT ATTACHED
BY ADHESIVE APPLIED
TO THIS SURFACE.



SADDLE MATERIAL AND FINISH DATA

CODE	MATERIAL	SPEC.	COLOR
K	PEKK	NONE	NATURAL
N	NYLON, NATURAL	ASTM D4066, D6779, OR EQUAL	NATURAL
NB	NYLON, BLACK, STABILIZED	ASTM D4066, D6779, OR EQUAL	BLACK
NH	NYLON, HEAT STABILIZED	ASTM D4066, D6779, OR EQUAL	NATURAL
P	PEEK	NONE	NATURAL
T	TEFZEL	FLUOROPOLYMER	BLUE
V	POLYETHERIMIDE	ULTEM 1000 OR EQUAL	NATURAL
VC	CARBON/POLYETHERIMIDE	NONE	NATURAL

BASEPLATE MATERIAL

CODE	MATERIAL
U	30% GLASS/PEI
V	40% GLASS/PEI
VC	40% CARBON/PEI

DIMENSION DATA

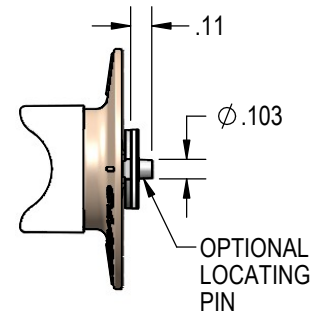
SIZE CODE	D REF	SADDLE DIMENSIONS		
		A	B	C
2	.100	.56	.34	.46
3	.190	.67	.44	.52
5	.350	.92	.56	.61

OPTIONAL BASEPLATE PRIMER

CODE	MATERIAL SPEC.
P	MIL-PRF-85582

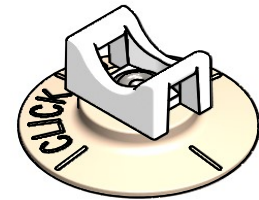
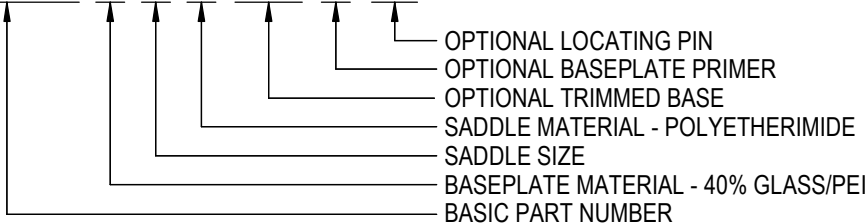
RIVET MATERIAL: 300 SERIES OR A-286 CRES
RIVET FINISH: PASSIVATE PER AMS 2700

MANUFACTURER'S OPTION:
300 SERIES CRES WASHER UNDER RIVET HEAD



EXAMPLE PART NUMBER

CB4519 V 3 V 750 P LP



UNLESS OTHERWISE SPECIFIED, ALL DIMENSIONS ARE IN INCHES AND TOLERANCES ARE AS SHOWN BELOW. DIMENSIONAL TOLERANCES AND SYMBOLS PER ANSI Y14.5M-1982.

THE PARTS SHOWN IN THIS DRAWING ARE PROPRIETARY AND MAY BE THE SUBJECT OF ISSUED UNITED STATES AND FOREIGN PATENTS AND PATENTS PENDING. UNAUTHORIZED REPRODUCTION AND/OR DISTRIBUTION OF THIS DRAWING IS SPECIFICALLY PROHIBITED.



2151 LOCKHEED WAY
CARSON CITY, NEVADA 89706

APPROVALS		DATE	
ANGLES	±1°	DRAWN	6OCT16
.XX	±.03	CHECKED	23JUL18
.XXX	±.010	RELEASED	23JUL18
.XXXX	±.001	REVISED	23JUL18

TITLE
MOUNT, CABLE TIE, COMPOSITE BASE

SIZE	CAGE CODE	DWG. NO.	REV.
A	66530	CB4519	1
SCALE: 1:1		23JUL18	SHEET 1 OF 1