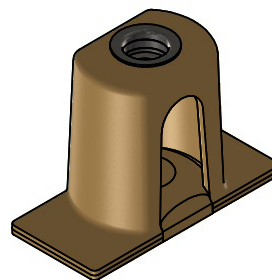


INSTALLATION FIXTURE
HOLDS MOUNT WHILE
ADHESIVE CURES.

MOUNT ATTACHED BY
ADHESIVE APPLIED TO
THIS SURFACE.



NUT AND RETAINER MATERIAL AND FINISH DATA

CODE	NUT MATERIAL	SPEC.	DRI-FILM LUBE	RETAINER MATERIAL	SPEC.	PASSIVATE
CR	A-286 CRES	AMS 5525	AS5272	A-286, 304, 305 CRES	AMS 5525, 5639, 5514	AMS 2700

BASEPLATE MATERIAL

CODE	MATERIAL
U	GLASS/PEI, 30% GLASS
UC	CARBON/PEI, 30% CARBON
V	GLASS/PEI, 40% GLASS
VC	CARBON/PEI, 40% CARBON

LENGTH L DATA

CODE	L
12	.750
16	1.000
24	1.500
29	1.812
32	2.000

THREAD DATA AND RECOMMENDED SCREW TIGHTENING TORQUE

CODE	THREAD SIZE	SPEC.	INSTALLATION TORQUE (IN-LBS)
08	.1640-32 UNJC-3B	AS8879	15-20
3	.1900-32 UNJF-3B		25-35
4M	MJ4 X 0,7 4H6H	ISO5855	15-20
5M	MJ5 X 0,8 4H6H		25-35

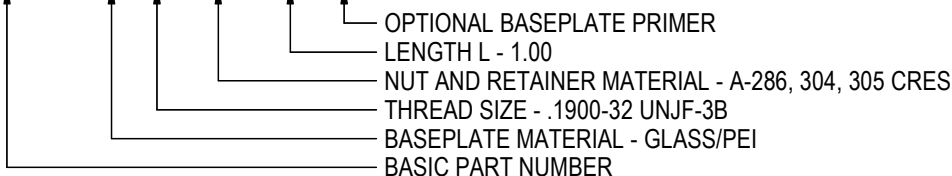
OPTIONAL BASEPLATE PRIMER

CODE	MATERIAL SPEC.
P	MIL-PRF-85582

RADIAL FLOAT OF NUT .030 MIN FROM CENTER.
SCREW CAN ENGAGE MAX MISALIGNED NUT.
THREAD LOCK BY ELLIPTICAL DEFORMATION.
STRENGTH REQUIREMENT: WILL WITHSTAND
A 50 LB LOAD APPLIED IN ANY DIRECTION.

EXAMPLE PART NUMBER

CB4523 V 3 CR 16 P



UNLESS OTHERWISE SPECIFIED, ALL DIMENSIONS ARE IN INCHES AND TOLERANCES ARE AS SHOWN BELOW. DIMENSIONAL TOLERANCES AND SYMBOLS PER ANSI Y14.5M-1982.

THE PARTS SHOWN IN THIS DRAWING ARE PROPRIETARY AND MAY BE THE SUBJECT OF ISSUED UNITED STATES AND FOREIGN PATENTS AND PATENTS PENDING. UNAUTHORIZED REPRODUCTION AND/OR DISTRIBUTION OF THIS DRAWING IS SPECIFICALLY PROHIBITED.



2151 LOCKHEED WAY
CARSON CITY, NEVADA 89706

		APPROVALS	DATE
ANGLES	±1°	DRAWN GTP	22NOV22
.XX	±.03	CHECKED <i>DA Carter</i>	22NOV22
.XXX	±.010	RELEASED <i>RDA</i>	28NOV22
.XXXX	±.001	REVISED GTP	22NOV22

TITLE			
NUTPLATE, STANDOFF, COMPOSITE, INTERNALLY FIXTURED			
SIZE	CAGE CODE	DWG. NO.	REV.
A	66530	CB4523	2
SCALE: 1:1		22NOV22	SHEET 1 OF 1